

REETH & DISTRICT GAZETTE

ISSUE NO. 358

APRIL 2026



*Your local news magazine
for the two dales*

PRICELESS BUT DONATIONS WELCOME

REETH AND DISTRICT GAZETTE LTD

Good Friday Walk

Friday 3rd April

**A Hike - A Pilgrimage - A Witness -
The Stations of the Cross**

Everyone is very welcome to join this walk, for some or all of the route, which largely follows the Old Corpse Way from Keld to Grinton. It's about 13 miles and 1,700 feet of ascent.

If you need a lift from Grinton to Keld for the start of the walk, or you'd like transport so you can join the walk later at Muker or Gunnerside, please contact Elizabeth Bedford on 07957 207579 by **31 March at the latest**. There'll be a small charge to cover the cost and availability will depend on demand.

Timings

8.00 am	Assemble at Grinton church for pre-booked transport
8.10 am	Transport leaves for Keld
8.55 am	Assemble in Keld URC for safety chat
9.00 am	Short service at Keld URC; walk starts at 9.10
10.30 am	Service at St. Mary's Muker, leave 11 am
12.30 pm	Gunnerside Methodist Church - lunch stop
1.10 pm	Short service at Gunnerside Methodist Church (hot drinks)
1.25 pm	Assemble and off
3.30 pm	Low Whita Bridge (drink and a biscuit)
5.00 pm	Arrive Grinton (Hot Cross buns and tea)
5.30 pm	Service in St. Andrew's Grinton

Post service - transport back up the dale, as far as Keld, if pre-booked.

Children are welcome, as long as they have an accompanying adult. Dogs are also welcome but must be kept on a lead **AT ALL TIMES** - there will be lambs and other livestock.

You'll need strong footwear, waterproof clothing and a picnic lunch.

The organisers will lead the walk; however you are responsible for your own safety. The route may change depending on the conditions that day. If the weather is really bad the services will take place as advertised, but there will be no organised walk.

Elizabeth Bedford

FREE

Muker Silver Band Concert

Easter Concert Muker Hall

MUKER SILVER BAND
ESTABLISHED 1897

2pm Sunday 5th April

EASTER SUNDAY 2PM

Muker Public Hall

Retiring collection in aid of Macmillan Cancer Support

REETH AND DISTRICT GAZETTE LTD

Gazette Management Committee

Chairman: Susan Miller

Longstone, Low Row, Richmond
DL11 6NA

Tel: 01748 886 358

E-mail: chairman@reethGazette.co.uk

Secretary: Sue Alderson

Holme View, Low Row, Richmond,
DL11 6PE

Tel: 01748 886 292

E-mail: secretary@reethGazette.co.uk

Editor: Jackie Pope

2 Pinfold, Peter Lane, Burton Leonard,
Harrogate, HG3 3RZ

Tel: 07885 498676

E-mail: editor@reethGazette.co.uk

Treasurer: Andrew Bedford

Glory Be, Blades, Richmond, DL11 6PS

Tel: 01748 886 974

E-mail: treasurer@reethGazette.co.uk

Subscriptions:

E-mail:

subscription@reethGazette.co.uk

Distribution: Marilyn Brown

The Cottage, Healaugh, Richmond DL11
6UA

Tel: 01748 884111

Email:

distribution@reethGazette.co.uk

Published by

The Reeth & District Gazette Ltd.

Company Number: 06541854

c/o The Company Secretary

Andrew Bedford, Glory Be, Blades

Richmond, North Yorkshire DL11 6PS

Tel: 01748 886 974

E-mail: treasurer@reethGazette.co.uk

No material may be reproduced in whole or in part without permission. Whilst every care is taken for accuracy, the publishers cannot be held legally responsible for any errors or opinions in articles, listings or advertisements.

ADVERTISING

For information on advertising and prices, please contact the treasurer. Advertising copy, should be sent to the editor.

The editor reserves the right not to publish any advert or article considered to be inaccurate or misleading.

All articles or items for inclusion should be sent to the editor

E-mail: editor@reethGazette.co.uk
or left at Reeth Post Office.

Donations

Can be made through our collecting tins in: CB Inn, Copper Kettle, Dales Bike Centre, Hudson House, Muker Tea Shop and Store, Punch Bowl Inn, Red Lion, Reeth Gift Shop, Reeth Post Office, Swaledale Woollens, and The Old School in Muker or by bank transfer to 77-91-29 40807260. using the reference "Supporter". Thank you.

Gazette Deadlines

The deadlines for the next two months are:

May issue: April 8th

June issue: May 11th

Please Note: We will endeavour to publish all suitable items submitted by the deadline date but this is at the sole discretion of the editor.

Posting The Gazette: Issues can vary in page number and so weight over the year. Postage will require a Large Letter size and will likely cost £2.00 2nd class, or £3.60 1st class but please check with the Post Office.

REETH AND DISTRICT GAZETTE LTD

Muker Parish Council Minutes of Parish Meeting Held January 2026

Present: Cllr Metcalfe, Cllr Reynoldson, Cllr Rukin, Cllr Calvert - Chair presiding.

Clerk: Mr Michael Cleminson.

Apologies for Absence: Cllr Porter, Cllr Peacock.

Matters Arising:

a. Grass cutting Muker 2026/27. The Council believed that the triangle of grass in Muker was not cut last year, but likely cut by residents before the Muker Show. North Yorkshire Council NYC, will continue to cut the grass twice a year, unless the Community decides to cut it. If so, NYC would pay the Parish Council £16.00 per year, Councillors decided that NYC should continue to cut the grass. Clerk to inform NYC.

b. NYC School Proposals. Cllr Peacock has informed the Parish Council that the provision of a bus from Keld to Richmond for school children is still under consideration. It was noted that some parents had appealed to the Ombudsman and there are issues concerning how distance is measured. The Parish Council were unable to appeal to the Ombudsman because it is a public body.

c. Future Ready Fuel Campaign. The Clerk informed Councillors of a government proposal to eliminate fossil fuels. The consultation describes alternatives, ranging from Air Source Pumps ASP and Hydrotreated Vegetable Oil HVO, a sustainable replacement oil boiler fuel, instead of Kerosene. ASP are expensive to buy

and run. HVO is 2.5 times more expensive than Kerosene and requires a £500 adaption, plus potential draining and cleaning of the tank and new piping. Cllrs were of the opinion that all options were cost prohibitive, pointing out that the majority of the properties in the Parish were constructed when fossil fuels were the only heating choice and that dwellings would require substantial insulation. For rural communities fossil fuels are the cheapest and most effective means of heating. Clerk to complete the survey on behalf of the Parish Council. It is also open to individuals to complete the survey. The Clerk has placed the link on Facebook.

d. Gov.uk email addresses for the Parish Councillors and Clerk to comply with Government requirements. The Clerk informed the Council that Cloud Next offered the cheapest at £59.98 per annum. All Councillors emails will be formatted as smith@mukerparishcouncil.gov.uk the Clerk's will be clerk@mukerparishcouncil.gov.uk

Finance: See above (d) Order to Pay, Cloud Next £59.98.

Highways:

Cllrs raised concerns about the cattle grid on the Buttertubs. The Clerk said that Highways had informed him that the grid is not standard and will have to be a bespoke one, which is causing a delay. Cllr Reynoldson pointed out that from 1 March sheep will be on the moors and that cyclists who have to dismount and use the side gate often leave it open, which would allow sheep to escape. Clerk to contact Highways to see if grid installation can be expedited or a solution to keep the

REETH AND DISTRICT GAZETTE LTD

side gate closed after use by cyclists. Cllrs are also concerned about Usha Gap bridge which seem to have been hit again and Scarr House bridge. Clerk to contact YDNPA to establish if they can assist. It is believed that planning permission is required for the bridges which has not been applied for.

NYC: Nothing to report.

NALC: National Association of Local Councils: The Council has been invited to complete a survey on a National Public Toilet Survey. Various County Councils across the Country are seeking to move responsibility for these to Parish Councils. The Clerk has completed the survey pointing out that without a substantial increase in the precept, the Council will not be able to maintain the toilets at Muker and Keld.

YDNPA: Listed building consent for installation of wall mounted OHME tethered EV car home charger at Greenlands, Muker, Richmond, DL11 6DY - R/06/72R/LB. Dealt with by email, application supported.

YLCA - Nothing to report.

Other Correspondence/AOB: None all dealt with above.

Next Meeting: 7.30pm Thursday 19th March 2026 at Muker Public Hall.

The meeting closed at 8.00pm.

CHARMING OLD COTTAGE IN THE CENTRE OF REETH (sleeps 6+)

Open fire & background heating.

Fully fitted kitchen, dishwasher, fridge/freezer

2 bathrooms, 2 double bedrooms, 1 twin bedroom & attic play area/fourth bedroom with 3 single beds.

Private, secure, rear courtyard area.
Dogs welcome.

Contact Denyse on 01325 722786 or
e-mail denyse00@btinternet.com
www.holidaycottageswaledale.com



John Blenkiron & Sons
Funeral Directors

Incorporating Simon Barningham, Reeth



**Thinking about
a Funeral Plan?**

choice^v
from Funeral Partners

A Choice Funeral Plan could give peace of mind and help your family with the cost of arranging a funeral and understanding your personal wishes.

For more information on our plans, visit your local branch, call us or go to blenkiron.co.uk/choice

24hr 01748 850033

Branches in Richmond, Barnard Castle, Catterick

Terms, conditions and limitations apply.

John Blenkiron & Sons Funeral Directors is a trading name of Funeral Partners Limited (Funeral Partners) which distributes Choice Funeral Plans, which are provided by Alternative Planning Company Limited (APCL). Funeral Partners is an appointed representative of APCL. APCL is authorised and regulated by the Financial Conduct Authority with firm reference number 965282. APCL and Funeral Partners are part of the Funeral Partners Group.

REETH CORNERSHOP & POST OFFICE

Groceries

Beers, Wines & Spirits

Milk, Dairy & Meat

Fruit & Veg

Household Goods

Books & Maps

Cards & Gifts

FOR ALL YOUR NEEDS

01748 884201

REETH AND DISTRICT GAZETTE LTD

The May Sinclair Heritage Group

Many people in the Two Dales will have heard of the Sinclair Essay Prize awarded annually to pupils at Reeth and Gunnerside schools. All may not be aware that the award dates back to at least 1926, possibly earlier, the result of a bequest given to Reeth School by May Sinclair in which she specified that the money be used to fund annual essay prizes.



May Sinclair was a prolific author and modernist who frequently stayed in Victoria House (now part of the Black Bull) in Reeth

before and during the First World War. At the time she was as famous, and perhaps more popular, than Virginia Woolf both in the UK and the USA.

She wrote two of her most famous novels here: *The Three Sisters* and *Mary Olivier: a Life*. The people, houses and landscape of Swaledale are easily recognisable in these novels.

The May Sinclair Heritage Group based in Reeth has recently been formed with the aim of applying to the Historic England Blue Plaque scheme for a plaque commemorating her visits to be erected on the front of the Black Bull. We have the support of the Swaledale Museum, Keld Heritage Centre and the May Sinclair Society.

We would welcome any information that local people have which might strengthen our application. Do you have any photographs of High Row in the 1910s, letters or diaries that mention May Sinclair in the Dales, or even just memories handed down? If so, please contact Judy Roger - Tel. 07968 749370 or email judy.roger@btinternet.com.





Owners Julie and Liz have their hearts in the Dales

"Delightful Cottage, perfect base for exploring the Dales"

-2025 Guest-

One bedroom Langthwaite Richmond DL11 6RE

Contact us for more details:
Email: ivycottagepartnership@gmail.com



REETH AND DISTRICT GAZETTE LTD

*A new and unique place
to stay in Hudswell
near Richmond,
North Yorkshire*



St. Michael's
LODGE

stmichaelslodge.com

Hudswell Community Charity have acquired our former parish church and thoughtfully converted it into a *Lodge for walkers, cyclists and other visitors* to the Yorkshire Dales.

01748 343022 / 07521158338
enquiries@stmichaelslodge.com



Hudson House

**Your valuable community asset
Rooms for hire**

Suitable for meetings, lectures, talks, training or social events.

The Meeting Room - maximum of 30 people.

The Meeting Place (evenings only) - maximum of 10 people.

Access to PCs, Internet, printer, photocopier, laminator and kitchen facilities.

The Orchard Gallery for hire

Suitable for exhibitions of paintings, photographs and other artwork.

Own entrance through the garden.

Sales can be handled for you.

For prices (special rates for community use), bookings or more information please contact **Jill May** on 01748 884 485 or admin@hudsonhouse.info

two dales bakery
reeth

ARTISAN BAKERY & CAFÉ

Delicious breads and pastries

Food served all day including
vegetarian/vegan options

Well behaved dogs welcome

Visit us at the Reeth Dales Centre,
Silver Street, Reeth,
North Yorkshire, DL11 6SP

Please see our website
for current opening times

www.twodalesbakery.co.uk

01748 905001  

Gunnerside Chapel

Forewarning of two events of note at Gunnerside Chapel in April. The first is the Easter Service which will be held at 6.30pm on 5th April. This will be led by John Little from Reeth, whose previous jobs have included working in His Majesty's Prisons, so there should be "little" chance of things getting out of hand during the proceedings.

The second date to note is Thursday 23rd April, at 2.30pm, when FroGs, (The Fiends of Gunnerside Chapel), will be holding its AGM in the chapel vestry.

Richard Hunt

Anyone for whist?

Mondays 1.30 pm

Quaker Close flats, Reeth



G E BROWN & SON BUILDING CONTRACTORS

All Building Work Carried Out
Damp Proof Course & Timber Treatment
Specialist Joinery Work
Work carried out by time-served qualified craftsmen

Email: gebrownson@f2s.com

Telephone: 01748 886356



- Carpets ● Wood Flooring ● Laminates
- Vinyl Tiles ● Vinyl Sheets ● Rugs ● Accessories

nh flooring

*The Carpet
& Flooring
Specialist*

- Amtico
- Karndean
- Panaget
- Brintons
- Westex
- & more



Contact us now for a FREE quote, advice or more information

t: 01748 822834 m: 07789 996526

e: enquiries@nhflooring.co.uk

w: www.nhflooring.co.uk

@nhflooring

@nh_flooring

@NH_Flooring

Unit 6 Borough Court, Borough Road, Gallowfields Trading Estate, Richmond. DL10 45X



A Magnum Opus, and more By John Hunter

A quick look this time at TV favourite and movie star, Tom Selleck. As many will know, his breakthrough starring role was as laconic Hawaiian P.I. Thomas Magnum, following a recurring role in James Garner's popular 70s show 'The Rockford Files'. He was famously offered the role of Indiana Jones in the original film, but the Magnum contract prevented this. Film roles *did* occur however with the western 'Quigley Down Under' and the two 'Three Men and a Baby' movies starring alongside 80s icons Steve Guttenberg and Ted Danson. Between 2005 and 2015 he played troubled small town police chief Jesse Stone in nine TV films based on the popular Robert B Parker novels. From 2010 to 2024 he starred as the NYC Police Commissioner Frank Reagan in 'Blue Bloods' which can be found on My5 catch up at present. I can thoroughly recommend Blue Bloods, which takes an intriguing look at policing in New York through the eyes of one family. The writing is first rate and the camerawork is stunning, reminding me of Kojak in the 1970s - particularly in the winter episodes! (I remember as a youth, the Kojak NY always looked cold and damp, contrasting with the perennially sunny LA in 'Starsky and

Hutch!'). Note how alleys are often backlit at night to create some stunning scenes - indeed the whole city is showcased brilliantly from Times Square to the docklands and beyond. It was, ironically, this expensive location footage that eventually priced the show out after fourteen seasons.

Briefly, the premise centres on the Reagan family - the patriarch Frank (Selleck) is Police commissioner, his father the ex-commissioner. Eldest son Joe has been killed in action, but the other two sons are now serving on the force too, Danny (played brilliantly by Donnie Wahlberg - elder brother of Mark) and young rookie Jamie. Sister



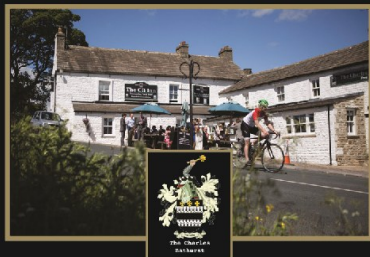
Erin is an ADA whose daughter Nikki, along with Danny's two young sons, add some youth to the cast. One feature, present in every episode, and criticised by some as been rather like the 'Waltons', has the whole family around the table for Sunday lunch where topics in the episode are

discussed, often in a lively fashion - and the younger family are occasionally dispatched to the kitchen if things get a little too 'adult'!

At least two, usually three plot strands weave through each episode, often involving politics at Frank's office, with his two close advisors, especially the brilliant Gregory Jbara playing his deputy. Add in the brothers' police partners, the DA's offices, the mob and the everyday folk in NY and you have a show packed with incident and intrigue - well worth catching if you can.

The Charles Bathurst Inn
ARKENGARHTDALE

Outstanding fresh food served in a warm & friendly atmosphere.
19 en-suite bedrooms with amazing views.
Available for dinners, weddings & meetings.



**FOR FURTHER DETAILS
OR TO RESERVE A TABLE**

Telephone: 0333 700 0779
Website: www.cbinn.co.uk

The Punch Bowl Inn

Outstanding fresh food served in a warm & friendly atmosphere, plus 12 cosy en-suite bedrooms with stunning views of Swaledale.



**FOR FURTHER DETAILS
OR TO RESERVE A TABLE**

Telephone: 0333 700 0779
Website: www.pbinn.co.uk



**Keld public hall centenary celebrations
November 1st 2026**

To celebrate our public hall being opened for 100 years, we are having a party for the residents of Keld and people who have been associated with Keld public hall over the past 100 years.

If you are interested in joining our celebrations which will take place between the hours of 13.00pm until 18.00pm

please contact Ernest Whitehead

on telephone number

01748 886968

Or Email whitehead.keld@gmail.com

REETH AND DISTRICT GAZETTE LTD

Leyburn & District u3a

Thomas Coram's Foundling Hospital and the Hallelujah Chorus by Joanne Aston
Friday 17 April 2026

Discover the link between Handel's Hallelujah Chorus and a historic institution for abandoned children. Retired sea captain Thomas Coram established the Foundling Hospital in 1739, to help deal with London's growing number of abandoned babies. Joanne's talk sets out this history and includes case stories both successful and tragic.



After retiring in 2008, Joanne completed an MA in Classical Studies (Leeds); before walking the 500 mile Camino to Santiago de Compostela. She now gives talks on this experience and other subjects reflecting her interests, studies and travels. She lives in Thirsk with husband John and cat Pea.

Visitors and new members are always welcome. Doors open at 10.00 for 10.30 at Leyburn Arts and Community Centre, Richmond Road, Leyburn DL8 5DL. For details contact Membership secretary www.leyburn.u3asite.uk

M. GUY - PLUMBING

For all your plumbing requirements
AGAS & RAYBURNS SERVICED
kathrynguy@designermakersmarket.co.uk
Tel: 01748 - 825640



Marrick Priory
Outdoor Education and Residential Centre

Tea & Talk 🍰🍰🍰

A Journey through
Bygone Swaledale



Presented by
Helen Guy
With tea and
cakes

16th May Reeth
Memorial Hall
2-4pm

Tickets £12.00 from
Reeth Post Office, at
the door or call

Kathy 01748886753

A talk not to be
Missed !!!

J. N. & E.

Capstick

INSURANCE CONSULTANTS LIMITED

CIR WINNER
COMMERCIAL
INSURANCE
AWARDS 2017
BROKER CLAIMS TEAM
OF THE YEAR

Specialising in farm,
home and motor
insurance



A local company, small enough to care, big enough to compete. So give us a try.

36 Main Street,
Sedburgh
LA10 5BP

Tel: 015396 20124
Fax: 015396 20791

Market Square,
Kirkby Stephen
CA17 4QT

Tel: 017683 72285
Fax: 017683 72346

Hawes Auction Mart
Buttersett Road, Hawes
North Yorkshire DL8 3NP

Tel: 07498 041 187
Open during auction hours

www.capstickinsurance.co.uk

J.N. & E. Capstick Insurance Consultants Limited is authorised and regulated by the Financial Conduct Authority

REETH AND DISTRICT GAZETTE LTD

St Andrew's, Grinton

St Andrew's winter church services continue to be held at Fremington Hall until the end of March on the 2nd and 4th Sundays at 9.30am followed by coffee at approx. 10.30am.

We move back to St Andrew's on **Easter Sunday, 5th April**. Please join us at either of these venues - all are welcome

Conservation Group meetings at St. Andrew's will take place on **Saturdays 11th April and 9th May**. These will be held on the second Saturday each month through to October. All are welcome so please come and support our conservation efforts in the churchyard (or cleaning efforts indoors) by joining us for coffee, oven fresh scones and a bit of 'outdoor gym' activities from 10am - 12 noon, weather permitting.

Bat Counts restart on **Wednesday 1st April at 1943hrs**. The next one will be **Wednesday 6th May at 2051hrs** and continue through to October on the first Wednesdays of the month at dusk.

Lambing Service - A Celebration of Sheep - Sunday 3rd May at 3pm. This special service will be held at Grinton Church to celebrate the end of lambing time. All are welcome and there will be tea and refreshments to follow. Farmers and their families are most especially welcome at this informal service to thank you for your work all year round. Lambs will be present and if the weather is good, the service will be held outdoors.

Saturday 11th April 2pm in **St Andrew's Church**, a concert kindly provided by the **Military WAGS choir Catterick Garrison** for the Helen Ashton Appeal for Childhood cancer research on behalf of CRUK.

Tickets are £13 and include a cream tea. There will be the usual raffle and a craft stall all supporting this great cause.

Tickets can be reserved online at pinktoberinthedaes@gmail.com in advance or purchased from Reeth Post Office.



ADVANCE NOTICES

St Andrew's Annual Car Boot Sale on Bank Holiday Monday 25th May on Parks Field, Grinton by kind permission of the Brown Family. It is time then to turn out your cupboards, fill up your car and make some money! Gates open at 7am for sellors [£10 entry] and at 8am for buyers [Donations at the gate]. Refreshments and plant stall will be available.

General enquiries, please ring Susan on 07969 424547 otherwise just turn up on the day.

Val Taylor


Richmond Footcare
KEEPS YOU ON TRACK!
Enjoy Dedicated and Professional Foot Care that is One Step Ahead of the Rest.



www.richmondfootcare.co.uk
1 Rosemary Lane · Richmond · DL10 4DP
075 111 119 84 or scan QR Code


hpc registered
www.hpcuk.org



Yoga Class

Tuesdays

09.30am – 10.30am

Reeth Memorial Hall

Contact Debbie for details

07707683317

yogadebbie@hotmail.com

S.J.R Plumbing Services

For all of your domestic
Plumbing requirements.

C & G/Advanced C & G Qualified

Reliable With Very Competitive Rates

Based in Reeth

01748-884036

Or 07977-297563

Geoff Braithwaite Property Maintenance & Painting and Decorating

Tel: 01748 886 783

Mob: 07535 431502

Email:

geoff@mukerchapel.co.uk

SWALEDALE

'POTTING ON THE NEXT GENERATION IN THE TWO DALES'



PLAYGROUP

WWW.SWALEDALE-SEEDLINGSGRUP

REGISTERED CHARITY NO- 1049110

Find us on Facebook – Search Seedlings Reeth

Swaledale Seedlings playgroup

'Stay and Play' Session

Thursdays (Term-Time) at Reeth Memorial Hall
9.30am until 11:25am

Open to all children under the age of 5

£3 per child per session

Pop into a session or message us on Facebook
for further information

**The Arts Society
Wensleydale presents
“Antony Gormley: A
Body of Work”**

Antony Gormley's career spans nearly 40 years, during which time he has made sculpture that explores the relationship of the human body to space, often using his own body as his starting point.

His work has been shown throughout the world, in galleries including the Tate in London and the Hermitage in St Petersburg, but is also often on open display, as public art, such as Another Place at Crosby Beach, near Liverpool.

As well as works that he is well known



for, like the iconic Angel of the North, this lecture will look

at some of his earlier and less well-known works, to give an overall view of the development of his work across his whole career, up to the present time.

The lecture, by Rosalind Whyte, will take place at Tennants Garden Rooms, Leyburn, DL8 5SG on Tuesday 28th April at 2pm.

There is plenty of free parking, a café and a restaurant, All welcome, members free, guests £10.

Alyson Jones

R. & W. GIBSON & SON Ltd.

**CERAMIC WALL
& FLOOR TILERS**

SHOWROOM NOW OPEN

Monday - Friday: 9.00am - 4.30pm

Saturday: 10.00am - 1.00pm

(or by appointment)

**At Borough Road,
Gallowfields Trading Estate
DL10 4SX**

Tel. 01748 - 822682 (Home)

Tel. 01748 - 821909 (Showroom)

“We cover the Dales”

Low Row and Feetham Literary Institute

Coffee Morning

Thursday 9th April 10am - 12pm



Raffle, Tombola, Produce stall

Donations and offers of help appreciated
Contact Sue Alderson Tel 886292
susana@swaledale.org

VICTORIA DESIGN GROUP LTD
Consulting Civil & Structural Engineers

**Consulting Structural & Civil
Engineers**

*Structural Surveys
All design work undertaken
whether domestic or commercial,
large or small*

Telephone: 01748 886717

Email: office@vdg.co.uk

Website : vdg.co.uk

REETH AND DISTRICT GAZETTE LTD

Elsie Whitehead

William, Gill, Sarah and families would like to thank everyone who sent cards and messages following our recent bereavement. Also, everyone who attended the Celebration of Life for Elsie held at the Garden Rooms at Tennants. A special thank you to the people who left donations in memory of Elsie, to the Samaritans, a charity very special to her. The total so far is £1125. If you would like to donate, please use the QR code.



NORTHERN WALLS DRYSTONE WALLING & LANDSCAPING

Former National Trust
gardener with 20 years
experience
City and Guild Certificate in
Horticulture
www.northernwalls.com
Tel 0795 148 1239

Struggling to stay on top of your business finances?

Overwhelmed with paperwork? Struggling with cashflow? Worried about Making Tax Digital for Income Tax?

*I can take the stress out of bookkeeping so you can
focus on your business.*

Bookkeeping (daily, weekly or monthly)

- Catch-up and Year-End Support
- VAT Returns
- Credit Control & Supplier Payments
- Real-Time Reporting
- Software Set-Up & Training



**YORKSHIRE DALES
BOOKKEEPING SERVICES**



Book a friendly confidential chat with me today

Contact Me



Email: emily@yorkshiredalesbookkeeping.com
Message via Whats App: 07797 730 596

ICB Qualified and Insured.
Practice Licence Number 24213

REETH AND DISTRICT GAZETTE LTD



April Update

As I sit down to write, we've just held our first joint fundraising event of the year with Leyburn Arts and Community Centre. A packed venue enjoyed a music themed quiz hosted by Angela Horner and Bee Darcey who tested our knowledge of Number One hits, Song intros, album covers and music trivia. Thank you to everyone who attended and helped support the event.

Raising Creative Aspirations - We are now welcoming applications from young people aged 16-26 year olds who are interested in working in the Creative Industries Sector. Supported by Youth Music and using public funding by the National Lottery through Arts Council England, we will be able to support 20 young people with coaching and business advice and 3 paid Freelance Creative placements designed to build careers in the music and creative industries. See website for more details or contact us to find out more.

Get Musical Jam Band - New sessions are running on Wednesday's 4.00pm - 5.30pm at Leyburn Scout and Guide Hall. If you play an instrument and would like to gain experience of being in a band with other young people, this sessions is for you. Current artists being covered include Cold Play, Imagine Dragons and Journey to name a few. Contact us to find out more.

Light My Choir! - Our mixed voice community choir is welcoming new members (16yrs and over). No prior experience required - come and meet our fun and friendly group and give it a try. We meet on Monday evenings 7.00pm - 9.00pm at Leyburn Methodist Church Hall. Contact us to find out more.

Wensleydale Community Arts and Leyburn Jazz Festivals - The programmes for both Festivals which take place in June and October are now available. Full information and tickets are on sale at www.wensleydale.org and www.leyburnjazz.org. Pick up an information leaflet from community information points to find out more.

Fund Raising Events in May

Spring Lunch - Saturday 2nd May, 12.30pm for 1.00pm at Thoralby Village Hall. Entertainment by vocalists Gail Barlow and Colin Bailey. Tickets are £15 each which includes welcome drink, two course meal with Tea and Coffee.

Live Music with The 684s at Leyburn Arts and Community Centre - Saturday 9th May, 7.30pm.

Local live 7-piece band take you on a nostalgic journey, celebrating the best of **Laurel Canyon Americana**. Expect hits and hidden gems from artists such as Carole King, The Byrds, James Taylor, Joni Mitchell, Mamas & Papas, Crosby, Stills & Nash, Zappa and many more!

Coffee Morning at Leyburn Methodist Church Hall - Friday 22nd May, from 9.30am. Pop along and enjoy a cuppa and a chat. There will

REETH AND DISTRICT GAZETTE LTD

also be a Cake Stall and Raffle.

Don't forget tickets are also on sale for:

Live Theatre: Twice Nightly - A celebration of the glory days of Variety. Dominic Goodwin is back for 'another titter' as Freddie Francis in his hilarious one man show, *Twice Nightly*. Freddie recalls his life as a second spot comic touring the country for 30yrs on every variety bill going. The show also includes routines from Max Miller, Rob Wilton, Jimmy James and Norman Evans and renditions of many of the popular songs of the time. Performances take place: Friday 5th June (Askrigg), Saturday 6th (Leyburn) and Sunday 7th (Reeth). Tickets £15, U18s £7.50 - Bar and refreshments available.

Colours Fashion Show - Wednesday 17th June, 7.00pm, at West Burton Village Hall. Back by popular demand so book your tickets early! We have teamed up with Colours, a nationwide retail organisation that specialises in supporting charities to raise funds. "Our ladies fashion show and shopping events are uniquely designed to offer a fun and entertaining experience. We bring premium high street brands to you at great prices!" There will be a Bar and Refreshments, Raffle, local makers stalls and entertainment with vocalist Bee Darceey. Ticket: £8.00 inc. welcome drink.

To find out more or book places for our events and activities visit www.blueboxt.org or contact Colin Bailey on: 01969 745810/ 07711 211169 or email: info@blueboxt.org

Friends of BlueBoxt invite you to a

Spring Lunch

At **Thoraby Village Hall**
DL8 3SU

On **Saturday 2nd May 2026**
12.30pm for 1.00pm

Two-course lunch
(Welcome drink, main and dessert, Tea and Coffee)

Entertainment by Vocalists
Colin Bailey and Gail Barlow

Tickets £15
Limited places - early reservation advisable

Book your place at
www.wensleydale.org

Tickets available from:
Ray Wilkinson, Eve Peacock or
Colin Bailey
info@Wensleydale.org
01969 745810



Proceeds in Aid of BlueBoxt Creative and Performing Arts
Registered Charity 1129194



TALL TREES LANDSCAPES

HARD LANDSCAPING
TREE SURGERY
GARDEN DESIGN
GARDEN MAINTENANCE

Fencing & Gates, Decking, Walling, Paths
Driveways, Groundworks, Drainage
Gabions, Sleepers, Turfing
Tree Planting, Pruning, Removal
Hedge Cutting, Stump Grinding.

If it's not on the list, get in touch
anyway and we will try our best to help.

Phone Tom Hollingworth on
0792932227
Talltreeslandscapes.co.uk
Talltreeslandscapes@hotmail.com



SALES - LETTINGS - MANAGEMENT
FREE 'NO OBLIGATION' MARKET APPRAISAL AVAILABLE
UPON REQUEST

6 Bridge Street
Bedale
DL8 2AD
01677 422282

bedale@
normanfbrown.co.uk

14 Queens Road
Richmond
DL10 4AG
01748
822473/822967

richmond@
normanfbrown.co.uk

25 Market Place
Leyburn
DL8 5AS
01969 622194

leyburn@
normanfbrown.co.uk

www.normanfbrown.co.uk

R.Foster

Tree and garden maintenance

All aspects of tree work undertaken.

Hedges & shrubs maintained.

Garden tidying. Stump grinding.

Tree & shrub planting.

**Lawn care. Cutting, edging,
scarifying and aeration.**

Gutters cleaned.

Tel Robert on 07870 444360

The Old School Muker
Art Gallery & Craft Centre

Guning Lane, Muker, Swaledale, DL11 6QG
www.theoldschoolmuker.co.uk
Tel: 01748 886155
email: ask@theoldschoolmuker.co.uk

REETH AND DISTRICT GAZETTE LTD

Musicality

Musicality Singers Ladies Choir have vacancies for new members especially for the higher-voiced section. We rehearse on Mondays 7 - 9pm, at Richmond Methodist Church and cover a wide range of music including songs from stage musicals, pop standards, gospel, sacred and works by past and present choral composers -something for everyone to enjoy.

A number of concerts for this year are already in place. Rehearsals are always lively and you are guaranteed a friendly welcome.

For more information and to arrange a taster session, call [07849 490472](tel:07849490472) or visit the Facebook page @musicalityladieschoir.



A. HOWARD JOINERY

no job too small

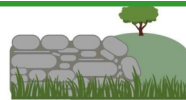
01748 884045

andrewhowardjoinery@gmail.com



Spotlight on your business?

Remember, the Reeth Gazette is happy to print (no fee) a longer piece spotlighting the work and developments of our long-term advertisers. Contact the Treasurer for more details.



DAN WALLER
CONTRACTING SERVICES

- Agricultural And Domestic Dry Stone Walling
- Grant Walling
- Fencing
- Landscaping
- General Maintenance And Repair Work
- City and Guilds Qualified Joiner

Mobile: 07722 489518 Email: danwrw@outlook.com

Sarah Louise Olney

Mobile Hairdressing

Facials

Massage

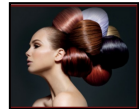
Reflexology

Indian Head Massage

Cruelty free products

Cruelty free hair colour

Reeth 07875 926946



Serving food between 12pm & 8pm everyday

Free to join loyalty scheme

No Table Reservations

Amazon, BT Sports & Sky Sports on 3 TV's

Pool Table & Dart Board

Pet Friendly

Monthly Quiz

Occasional Live Music

Warm Welcome

Cask Marque accredited & CAMRA discount

www.thebuckreeth.co.uk

Tel 01748 884 545

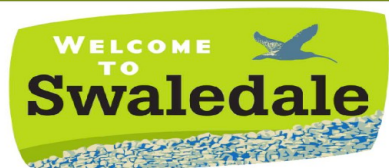
Email stay@thebuckreeth.co.uk

'The perfect Summer Vibes...'



For their second appearance this year at The Station, John and Jane Hunter's 'Good Vibes' Jazz combo return for another night of swinging jazz, film and show tunes and a touch of light classics. All recent evenings have been total sell-outs so those interested are encouraged to purchase tickets as soon as possible. As usual the evening features a two-course meal in addition to the musical entertainment.

Jazz @ The Station, Richmond - Saturday, 2nd May 2026 - For further information and tickets contact The Station, Richmond. Call 01748 825967 or email reservations@thestation.co.uk.



S A B F

Swaledale & Arkengarthdale Business Forum

Members, get assistance to enhance or update your entry

Non-Members, send your details for a basic entry

**visit our website
www.swaledale.net**

Packed with useful information for visitors and locals alike, including a comprehensive services directory

James Peacock



**Solid Fuel Merchant
Bainbridge**

Good quality fuels at competitive prices.

Deliveries to Wensleydale, Swaledale and Coverdale.

No delivery too small.

Tel. 01969 650212/650465

info@james-peacock.co.uk

www.james-peacock.co.uk

Fremington Village Hall

Redecorated and now with its own piano, the Village Hall (known locally as the Sunday School) is available to hire for all kinds of events, from regular classes, talks and community activities, to one-off functions like children's parties, lunches and dinners and special occasions such as wedding receptions and anniversary parties. The Hall has a small kitchen with electric cooker and microwave; toilet facilities including disabled toilet; and a small rear garden.

The Hall is a registered charity run by a small and dedicated volunteer committee. You can book the Hall by phoning or texting the bookings

secretary **Carol Witham** on **07783 924827** or by email at **c.witham149@btinternet.com**

REETH AND DISTRICT GAZETTE LTD

North Yorkshire Police - We Need Your Voice

I'm really pleased to share that North Yorkshire Police are looking for new members to join our Independent Advisory Groups within Hambleton and Richmondshire (IAGs).

IAG members play a vital role in shaping local policing by offering honest feedback, sharing community perspectives, and helping us better understand the issues that matter to you.

We're looking for people from all backgrounds, experiences and communities across Hambleton and Richmond.

We will also have guest speakers attending from different departments within North Yorkshire Police.

You don't need any special qualifications, the only requirement is being able to receive, send emails and join our on-line meetings which will occur quarterly.

🗓 The first meeting will be held on Thursday the 21st of May 2026 between 1800-1930hours.

If you want to be added to our distribution list to be involved within the meetings then please email:

lauren.wilkinson@northyorkshire.police.uk
<<mailto:lauren.wilkinson@northyorkshire.police.uk>> or lucy.mawer@northyorkshire.police.uk
<<mailto:lucy.mawer@northyorkshire.police.uk>>

Thank you for your support! 🚓

Police Sergeant 375 Lauren Wilkinson

MICHAEL GUY ELECTRICAL

FULLY QUALIFIED ELECTRICIAN

Over 20 years experience working in the dales in all areas of electrical work.

Some of my services include:

Complete rewires | Electrical installation condition reports | Electrical vehicle charging points | Additional & alterations to socket & lighting points | Replacement of storage heaters to modern eco panel heaters.

Contact Michael :

07980 130017

Mail: info@michaelguyelectrical.co.uk

Website: Michaelguyelectrical.co.uk

APPROVED ROINTE HEATER INSTALLER

NICEIC APPROVED CONTRACTOR

HARKERS COACHES



Hill Top Garage, Reeth

Tele: 01748 884533

Pauls Mob: 07703 559959

**COACH,
PRIVATE
HIRE &
GARAGE**

Coach, Mini Bus and private taxi hire
General vehicle maintenance including services, tyre supply, fitting and balancing.

REETH AND DISTRICT GAZETTE LTD



**SWALEDALE
MOUNTAIN
RESCUE
TEAM**



In an emergency DIAL 999 ask for the POLICE then

Mountain Rescue / Cave Rescue / Mine Rescue / Flood Rescue

Charity Commission Registration No: 1201870, providing Mountain and Cave Rescue in the Northern Yorkshire Dales

The team is made up of highly trained volunteers available, 24/7 in any weather, any time of the day or night.

MOUNTAIN & CAVE RESCUE

On average we respond to between 40 and 50 calls each year.

In 2025 we attended 52 incidents (including out of area Dog Searches).

**Incidents 8th Feb to 8th March 2026
04 Incidents this edition**

Incident 14: 22/02/2026: Called by the Police to rescue a couple of walkers unable to descend Great Whenside. As it's on the boundary with Upper Wharfedale Fell Rescue Association (UWFRA) we ask them to stand by should we need extra members. Fortunately, as we arrived at the walkers' location they had managed to self-recover to Kettlewell, finally getting phone reception they contacted the Police and we stood down. Conditions this evening are moderately miserable

Incident 13: 19/02/2026: Called by the Ambulance service to rescue an injured walker near Caldwell. As the first team members arrived it turned out that the Ambulance crew had been able to assist the casualty to the Ambulance

Incident 12: 19/02/2026: Called by the Police to rescue a family stuck in snow ice and mud (in a vehicle) on a remote road. We were already travelling to training so a few of the team diverted and with the help of a local farmer the family were recovered.

Incident 11: 08/02/2026: Called by the Police to assist Reeth Fire crew with the rescue of a dog stuck on an island below Kisdon waterfall at Keld. Fire had recovered the dog as we arrived but needed assistance to get the dog and crew back up the steep loose terrain to the path. A simple rope system was rigged, and everyone was recovered safely back to Keld.

Thanks to The Buck - Reeth their recent fundraiser achieved £239

Bishop Auckland Canoe & Kayak Club have unfortunately closed as a club; they however have made a very generous donation to the team which we'll be using for new water rescue equipment



We now have a limited number of season 2026 neck tubes in stock.

Kindly sponsored by Swalewoods Ltd. Available from this weekend at the Kings Head Gunnerside and Brompton Caravan Park £10 each.

SMRT

The Black Bull

Reeth's Oldest Inn, serving a range of Real Ales

Comfortable en-suite accommodation,
Traditional Pub Fayre served daily
Sunday Carvery (booking advised),
Coaches welcome

Tel: 01748 884 213,
Email: bookings@theblackbullreeth.co.uk,
Black Bull, Reeth, DL11 6SZ,
www.theblackbullreeth.co.uk



SWALEWOODS LTD.

FORESTRY & ARBORICULTURE
AGENTS, CONSULTANTS & CONTRACTORS



Whether you have a fruit tree in need of pruning, a large commercial timber plantation to manage, a hedge to cut, or ancient woodland to restore, we offer a competitive service to help you get the most out of your trees!

Contact Chris Curry at Swalewoods for all tree surgery and forestry services:

M: 07528 684617

E: chris.curry@swalewoods.co.uk

W: www.swalewoods.co.uk

O: West View, Healaugh, Richmond, North Yorkshire. DL11 6UD



| Forestry Management | Stewardship Schemes | Woodland Establishment | Tree Inspection | Tree Surgery |





Three Reforms to Stop the Criminal Killing of Birds of Prey

Despite more than 70 years of full legal protection, raptor persecution remains a serious and persistent wildlife crime. The Yorkshire Dales is one of the UK's worst-affected areas, with 152 confirmed incidents of persecution or suspicious disappearances recorded between 2009 and 2023.

To tackle these wildlife crimes effectively, the charity Friends of the Dales is asking people and supporting organisations to add their name to its Petition to Government seeking **better national recording of wildlife crime, the introduction of sentencing guidelines and the strengthening of penalties for offenders, and more effective regulation for those industries where the crimes often happen.**

Head over to its website at www.friendsofthedales.org to find out more and add your name.

The charity also has the following events scheduled to support its **Eyes on the Skies** campaign speaking out against birds of prey persecution:

Birding for Beginners

Saturday 9 May, 10am - 4pm

Designed especially for 18-35 year olds, this event offered in collaboration with the Upper Wharfedale Field Society, comprises an informal but informative morning

session near Grassington to get you clued up on what to look (and listen!) for. In the afternoon participants will then venture out on a **4-5 mile scenic walk**, spotting birds along the way and learning how different species use the landscape throughout the year.

To book email: victoria.benn@friendsofthedales.org.uk

Online Talk - Talking Raptor Persecution with Dr Ruth Tingay

New date Wednesday 20 May, 5.30pm - 7pm

A unique opportunity to hear from wildlife conservationist Dr Ruth Tingay, who has worked in the field of raptor research and conservation for more than 30 years. A former President of the international [Raptor Research Foundation](#), Ruth now focuses on **campaigning against the illegal killing of birds of prey in the UK through the blog [Raptor Persecution UK](#)**. Ruth is also a co-director of the wildlife conservation organisation [Wild Justice](#), with Chris Packham.

Book at: www.friendsofthedales.org.uk/events



Female Hen Harrier, photo Mark Harde

SWALE SINGERS
REQUIEM
— Fauré & Duruflé —

Saturday 25th April 2026
— 7:00pm —
St John's Church, East Witton

Conductor: Peter Stallworthy
Soprano Soloist: Hannah Yeadon
Baritone Soloist: Ben Noble
Organist: Tim Harper

Free Entry
Retiring collection

Martyn Leaver
Dry Stone Waller

- Farm or domestic work
- Drystone or facewalling
- Fence repairs and paving
- Misc jobs etc

Thwaite 01748 886025
Mob: 07971 456 043



YOUR LOCAL TRADITIONAL
CHIMNEY SWEEP
NACS & HETAS qualified & registered

**We set ourselves very high standards
and take every care in your home**

We offer a comprehensive service
All types of chimneys swept to relevant BS Std.
Bird guards & cowls, etc. supplied & fitted
Advice freely given, problems solved
Carbon monoxide detectors
Chimney pots replaced

01765 688078
www.sweepinthedales.co.uk

Stove Refurbishment
Stove servicing and repair
Solid fuel stove installations
Stainless steel flexible linings
Stainless steel rigid flue systems
Only high quality components are used

HETAS qualified & registered installer
STOVE INSTALLATION



Lady Interior Decorator

Painting & Decorating, Competitive rates
Established 30 Years: Based in Richmond
Free estimates, Friendly advice, Est 29 years

Call Yvonne on: 07838378836
Email: yvonesdecor@hotmail.co.uk

REETH AND DISTRICT GAZETTE LTD

Church Opening Times and Services in April

2nd April	7.00 pm	Holy Trinity Low Row	<i>Eucharist and Watch</i>
3rd April	9.00 am	Keld URC	<i>Start of Good Friday Walk</i>
Good Friday	11.00 am	Reeth Evangelical Congregational	
5th April	9.15 am	St. Mary's Muker	<i>Eucharist</i>
Easter	9.30 am	St. Andrew's Grinton	<i>Eucharist</i>
Sun- day	9.30 am	St. Michael's Downholme	<i>Holy Communion</i>
	10.30 am	St Joseph & Francis Xavier Richmond	<i>Mass</i>
	10.30 am	Low Row URC	
	11.00 am	Holy Trinity Low Row	<i>Eucharist</i>
	11.00 am	Reeth Evangelical Congregational	
	11.00 am	St. Edmund's, Marske	<i>Holy Communion</i>
	11.15 am	St. Mary's Arkengarthdale	<i>Holy Communion BCP</i>
	3.00 pm	Keld URC	
	4.00 pm	Reeth Evangelical Congregational	<i>Refreshments from 3.45 pm</i>
	6.30 pm	Gunnarside Methodist	

United Reformed Church
Rev. Nadene Snyman
Tees and Swale Pastorate
07876 707863
teesandswaleurc@gmail.com

Methodist
Rev Jo Brown
01969 623818
jo.brown@methodist.org.uk

**Reeth Evangelical Congregational
Church**
The Revd David Levell
07582 575 815 www.reethecc.co.uk

Roman Catholic
Fr John Bane
01748 822 175
www.stjosephsfx.co.uk

Church of England
Reverend Canon Caroline Hewlett
Vicar of the Parish of Swaledale with Arkengarthdale
01748 884706 carolinejhewlett19@gmail.com

REETH AND DISTRICT GAZETTE LTD

Church Opening Times and Services in April

12th April	9.30 am	St. Andrew's Grinton	<i>Eucharist</i>
	9.30 am	St. Michael's Downholme	<i>Holy Communion</i>
	10.30 am	St Joseph & Francis Xavier Richmond	<i>Mass</i>
	10.30 am	Low Row URC	
	11.00 am	Reeth Evangelical Congregational	
	11.00 am	St Edmund's Marske	<i>Holy Communion</i>
	11.15 am	St. Mary's Arkengarthdale	<i>Holy Communion BCP</i>
	4.00 pm	Reeth Evangelical Congregational	<i>Refreshments from 3.45 pm</i>
19th April	9.15 am	St. Mary's Muker	<i>Eucharist</i>
	10.30 am	St Joseph & Francis Xavier Richmond	<i>Mass</i>
	10.30 am	Low Row URC	<i>Holy Communion</i>
	11.00 am	St Edmund's Marske	<i>Holy Communion</i>
	11.00 am	Holy Trinity Low Row	<i>Eucharist</i>
	11.00 am	Reeth Evangelical Congregational	
	4.00 pm	Reeth Evangelical Congregational	<i>Refreshments from 3.45 pm</i>
	6.30 pm	Gunnerside Methodist	
26th April	9.30 am	St. Andrew's Grinton	<i>Eucharist</i>
	9.30 am	St. Michael's Downholme	<i>Morning prayer</i>
	10.30 am	St Joseph & Francis Xavier Richmond	<i>Mass</i>
	10.30 am	Low Row URC	
	11.00 am	St. Edmund's, Marske	<i>Holy Communion</i>
	11.00 am	Reeth Evangelical Congregational	
	11.15 am	St. Mary's Arkengarthdale	<i>Holy Communion BCP</i>
	4.00 pm	Reeth Evangelical Congregational	<i>Refreshments from 3.45 pm</i>

Religious Society of Friends (Quakers)

Quaker House, 7 Grove Square, Leyburn every Sunday at 10.30 am
The Scout Hut, Quakers Lane, Richmond 2nd and 4th Sundays at 10.30am
www.dalesquakers.org.uk

2Dales Digital

Family Business to Support
you at home



Local Support for
your
Desktop & Laptop

Common issues we can help you with and many more:

- | | |
|---|---|
| <input type="checkbox"/> Error Messages | <input type="checkbox"/> Deleted files by mistake |
| <input type="checkbox"/> Virus & Malware warnings | <input type="checkbox"/> Disk full |
| <input type="checkbox"/> You cannot access your files | <input type="checkbox"/> File read/write errors |
| <input type="checkbox"/> Lost documents or Photos | <input type="checkbox"/> Computer will not start up |
| <input type="checkbox"/> Windows warnings and errors | <input type="checkbox"/> Blank screen |
| <input type="checkbox"/> Power issues | <input type="checkbox"/> E-Mail issues |
| <input type="checkbox"/> Software not installing | <input type="checkbox"/> OneDrive backup issues |
| <input type="checkbox"/> Locked out of account | <input type="checkbox"/> Laptop screen cracked |
| <input type="checkbox"/> Windows update failed | <input type="checkbox"/> Laptop screen hinge issues |

For Support: Email : mikebarden@yahoo.com
Phone : 01748 884737

A.J.CLACHER LTD

Established 1961

PLUMBING & HEATING ENGINEERS

- Oil, Gas, LPG and solid fuel central heating installations

- All aspects of plumbing and heating installations

VIESMANN

- Specialists in boiler servicing and repair



- Oil tank installations

- Landlord Gas Safety Inspections

- Bathroom installations and Plumbing

NIBE

- Air and Ground Source heat pumps

Nu-Heat
Feel the difference

Tel 01325 468372 Email info@ajclacher.co.uk

www.ajclacher.co.uk



Middleham and the Dales Local History Group

Wednesday 15 April, 2.00pm at
Leyburn Arts and Community Centre
How the Stockton and Darlington
Railway got the world on track,
by Chris Lloyd

The historic 26-mile journey between Sildon and Stockton via Darlington on 27 September 1825 transformed how the world traded, travelled and communicated. Engineered by George and Robert Stephenson, it was the world's first public railway to use steam locomotives. The opening drew 40,000 spectators and a holiday was declared in Darlington.

Local journalist, historian and excellent speaker Chris Lloyd will provide stories and images from the railway's beginnings. Members, new members and visitors are always welcome, annual membership is £12 for 9 meetings and visitors can attend for £3 per meeting. For more information contact Tony Keates 01969 640436, dotandtonyk@btinternet.com

3D Cross-Stitch



The Nutmeg Gallery

Reeth DL11 6SP
(Reeth Dales Centre, off Place Hill)

Open April to October
Tue, Wed, most Thurs and some Saturdays.
During the winter and for other times ring

01748884926 or visit
www.3dcrossstitch.co.uk

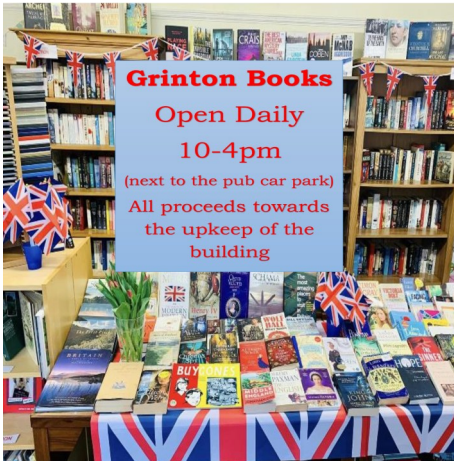
PIANO TUNER

PAUL GRAY M.P.T.A

Tel: 07798 525846



Reawaken your passion for music
paulgray.pianotuner@gmail.com



RCleaning Services

DOMESTIC & COMMERCIAL CLEANING

- Reliable & trustworthy
- Insured
- Regular cleans
- One-off cleans
- EOT cleaning
- Air bnb & changeover cleans
- Offices & work spaces

DBS CHECKED
Domestic & Barbing Service

Covering Reeth and surrounding areas!

Weekly / Fortnightly / Monthly Slots Available

RCLEANING.SERVICES

07531561487

RCAHHS@HOTMAIL.COM

REETH AND DISTRICT GAZETTE LTD

Keld Heritage Centre

Events for April and May

12th April - In Search of the Source of the Swale 14.00-16.00 Keld Heritage Centre

Join Prof. Mark Rutter who will be sharing his intriguing findings of 'where is the Swale's source?' Reviewing old maps and literature as well as state of the art Hydrological analysis of Upper Swaledale. Refreshments served afterwards. Charge £10 pp

19th April - Cyanotype Printing Workshop 10.00 - 15.00 Keld Heritage Centre

Jane Beaumont will introduce you to Cyanotype printing on fabric, producing one or two 'negative' images on a rich blue background from objects sourced that morning from Keld and surrounding area. You will then develop one of your images as a stitched or embroidered piece. Please bring a packed lunch or sandwiches/salads available to order/pay on day. Charge: £60 pp

26th April - Proddy Craft Workshop 10.00 - 15.00 Keld Heritage Centre

Join Anne Hewitt and learn the traditional skill of proddy rug work. Create your own small project - perfect as a decorative chair pad or charming keepsake. Refreshments served. Please bring packed lunch or salads/sandwiches available to order and pay on the day. Charge: £65 pp

9th May - Felt Plant Pot Cover Workshop 10.00 - 16.00 Keld Heritage Centre

Learn how to make your own wet felt and then turn it into a plant pot cover. All materials, including plant pot,

included. Can be hung outside or used inside. Please bring packed lunch or sandwiches/salads can be ordered/paid on the day. Refreshments served. Charge: £60 pp

10th May - Swaledale Geology and Landscape Day 10.00 - 16.00 Keld Heritage Centre

A Morning session comprising of 2 short talks by Stephen Clark and Les Knight covering the geological structure of the Pennines and impact of glaciers. In the afternoon there will be a guided field trip around Keld area looking at the geology and lead mining. Please bring a packed lunch or sandwiches/salads available to order/pay on day. Charge £20 pp

Full details and tickets available via keldheritage.co.uk or our Facebook page.

Email helenguy47@gmail.com

Booking essential due to limited places for some events.

Hindsight

Accountants

- Bookkeeping, Payroll and VAT Returns
- Annual accounts and tax returns
- Company Formations

11 Finkle Street, Richmond, DL10 4QA

Tel: 01748 822049

Email: info@hindsightaccountants.co.uk



ALL OCCASIONS CATERED FOR

HOT & COLD FOOD OPTIONS
CAKES & TRAYBAKES

Contact Anne & Claire:

07837 805413

clairewilliams10@hotmail.com



Find us on Facebook & Instagram
@EASarterCatering

REETH AND DISTRICT GAZETTE LTD



**CHANGING YOUR CAR
IT'S A CINCH AT DORANTS
CHOICE OF THOUSANDS
PART EXCHANGE WELCOME
AND WE'RE LOCAL
SIMPLES**

**Jed Collins, Bridge Garage, Reeth
01748 884245**

THE OLD TEMPERANCE BOOKSHOP

Reeth, Richmond, DL11 6TE

Tel. 01748 884185

**Christian books & cards,
Fairtrade crafts and food**



Beside the village green in Reeth, we are 50 yards up from Reeth Evangelical Congregational Church

Opening times:

1.30pm - 4.00pm Mon, Thurs, Sat

10.30am - 4.00pm Fri

**CLOSED from
Sun 22nd March to Thus 9th April**



KARL LONGDEN PLUMBING

Reeth, North Yorkshire
karllongdenplumbing@yahoo.com
Tel. 01748 889951
Mob. 07969 329893

24 HOUR CALL OUT SERVICE



PEST CONTROL

Don't let pests become a problem, call us right away for a professional, reliable and discreet service.

- Rats / Mice
- Wasps / Insects
- Nuisance birds



SCAN ME

☎ 07818 836527

🌐 www.yorkshiredalespestcontrol.com

Knitted Bible Exhibition

Barnard Castle Methodist Church
Fri 24th April - Wed 29th April 2026

Times:

Fri 24 April 10-4 pm and 6-8pm
Sat 25 April 10-4 pm
Sun 26 April 12.30 - 4 pm
Mon 27 April 12-4 pm and 6-8 pm
Tues 28 April 12-4 pm and 6-8 pm
Wed 29 April 10-12.30 pm

We have pleasure in hosting this wonderful exhibition which is made up of 39 scenes from the Bible depicted by 20 cm high figures of animals, buildings, boats, shrubbery etc, all intricately knitted by volunteers. Viewing this exhibition is truly a wonderful experience for the young and the old. Do come along and, if you wish, we have printed worksheets to complete and take away with you as a memento of your visit.

Admission is free, although donations would be welcome and light refreshments will be available.

Margaret Wills



YOU ARE INVITED TO
Easter Family Fun

Craft together!
Celebrate together!
CHAT together!
and... CHEW together!

COME & HEAR THE EASTER STORY

- Easter Crafts for All
- Games
- Refreshments
- Easter Egg for every child

FREE event

Saturday 4th April
2 PM - 3.30 PM

Reeth EC Church
(the church on the green)

Hudson House Centre Reeth

Owned by the Community of
the Two Dales

Community

- Gallery
- Learning
- Library
- Orchard
- Transport

National Park Centre

North Yorkshire CC

Police

Richmondshire DC

Swaledale Festival

Business Forum

Hot drinks vending machine

Internet & WiFi

Local notices & information

Meeting Rooms

Tourist Information & Shop

Open all year

7 days a week

See website for times

Silver Street Craft Unit's
managed by Hudson House.

For all enquiries contact
Jill May.

01748 884485

www.hudsonhouse.info

50 Years Ago!

More best reads of 2025

**50th Anniversary
Film Release Screening
Celebration
Muker Public Hall**



Based on the **James Herriot** Stories
It SHOULDN'T HAPPEN to a VET

filmed on location in Muker, Swaledale and the surrounding area
Come along and share your stories as we take you down memory lane...

SOLD OUT

Saturday 18th April 2026 at 4pm
(Doors open 3:30)

Tickets £10 each (includes a light supper)
N.B. Tickets must be booked in advance

For all enquiries and ticket sales mukerorg@gmail.com or 01748 889992

There will be a small cash bar and all proceeds from the event go to Muker Public Hall DL11 6QQ

Your recommendations for the best book you read in 2025 are still coming in, so thank you for sharing what you've enjoyed.

Liz Sykes plumps for **Glyph** by Ali Smith, because, in Liz's words, "She's such a good writer."

Barbara Buckingham suggests the author **Diane Allen** is a good read. Babara writes:

"The easy-to-read, happy-ending plots of her novels are set in our dales. The locations are not disguised. The greater value of the novels is the accuracy of the details of local life and her faithful and knowledgeable use of local words and phrases. As an introduction to dales life the stories are valuable and instructive."

Diane Allen actually visited our library a few years ago when she was kind enough to donate copies of three of her books, in large print. They are on display and can be borrowed.

Another recommendation is "Raising Hare" by Chloe Dalton. I think this is the first time a book has had two nominations, and they were from Maggie Kentsbeer and Mima Wilson.

Chloe, a busy professional, finds a newly born, helpless hare and decides to save it from death. It's a heartwarming, moving, and gentle narrative that highlights the profound connection between human and wild animals.

SOLD OUT

Thank you for the amazing interest in this event. Unfortunately, all available tickets are now booked and sold.

We are however still collating memories and photos etc, so if you have any that you're willing to share for the event we would love to hear from you.

Please contact 01748 889992 or email mukerorg@gmail.com.

Chris Browne

Langthwaite - Arkengarthdale

RED LION INN

Free House
Real Ales – Bar Snacks
Books & Maps
Tel. 01748 884218

elizabeth@bedfords.me.uk

Cover photo: Lamb and mother by the Swale by Annie Wallace

Muker Show Field Purchase Appeal

Muker Show Committee have been offered an opportunity to purchase the main show field where the show has been held since 1893. This is a wonderful opportunity for the Show to own the main show field, ensuring it will continue to be the 'home' of Muker Show for many years and future generations to come.

The Show Committee have raised nearly £30,000 to date, and we are now opening up the fundraising to the public, so everyone has the opportunity to contribute towards the field purchase as we know just how special the show is to so many. This will allow people to feel they have helped secure both Muker Show and the field's future.

You can donate via our official Gofundme page: <https://gofund.me/53c166430> which can be accessed via our Facebook page and www.mukershow.co.uk.

Cheques can be made out to Muker Show Ltd and posted to: Helen Guy, East View Cottage, Keld, North Yorkshire, DL11 6LJ

All donations will be very much appreciated

Thank you in advance for your support
The Muker Show Committee



SWALE HAIR SPA



LOOK GOOD- FEEL GREAT -BE-WELL.

At Swale Hair Spa, we offer a complete range of **hair care services** designed to help you look good, feel great, and truly unwind. From **precision cutting** and **bespoke colouring** to **restorative treatments** and **scalp care rituals**, every appointment is tailored to you. Whether you're visiting for everyday maintenance, a seasonal refresh, or a little time out for yourself, our **calm**, welcoming space and expert team are here to care for your hair and your **wellbeing**.

We are open **Tuesday- Friday**, plus every 3rd **Saturday**.

Call us on: 01748 884627

Email us: info@swalehairspa.com
www.swalehairspa.com

T.A.R.Longstaff

Mobile Hydraulic hose repairs in Reeth and surrounding areas, anywhere anytime.

Also mobile on site welding.

Tel Percy on 07889725349.

REETH AND DISTRICT GAZETTE LTD

SWAAG

In the March edition of the Gazette, I suggested that the Battle of Catreath c.600AD may have taken place in and around the Grinton-Fremington Dykes and Maiden Castle. There is very little tangible evidence of who lived around here at that time, which is strange. There is plenty of evidence of people here during the Roman times and earlier and from the time of the Conquest (1066AD) on, but virtually nothing from the 'Dark Ages' now known as the Early Medieval. It is thought that during this period people continued to live in wattle and daub round houses as in earlier times; maybe sites which we think of as Iron Age continued in occupation throughout this time? In June we hope to have a one-week 'dig' in Grinton to explore what appears to be an Iron Age round-house within a defended settlement. It might be earlier; it might be later. It has even been suggested that it is the base of a Roman Signal Station! We hope to find out. If you are interested then keep an eye on our website new-swaag.org

Our next talk will be on Tuesday 14th April, 7:30pm in Fremington Village Hall. Dr Rob Young, retired English Heritage Inspector of Ancient Monuments for the North-East of England, will talk about work carried out both within and around Blanchland Abbey... and some of the results are really intriguing! Members free, non-members welcome with a suggested donation of £5. See new-swaag.org/our-events-diary/ for details.

Alan Mills

SWAAG is a registered charity no. 1155775

THE HEALING COLLECTIVE

Encouraging health and well being with a range of therapies including
* Reiki * Counselling * Bach Remedies *
* EFT (tapping) * Indian Head Massage *
Treatments for animals also available.

Coach House, Berry's Farm Shop & Café,
Swinithwaite, DL8 4UH. t.0845 474 2383
info@healingcollective.co.uk
www.healingcollective.co.uk



Home Run

Pet sitting, House sitting, Dog walking

I offer a friendly, personalised pet and house sitting service in and around Swaledale.

Nicola – 07866 336924
nicola@homerundogsitting.co.uk
www.homerundogsitting.co.uk



M.W Waste Services

Environmental & Drainage Specialists

Septic Tanks Emptied & Cleaned
Blocked Drains Cleared Fast
Grease Traps & Interceptors Emptied
Soakaways Rebuilt & Repaired
Gully Emptying & Street Cleaning
Refuse Collection
Septic Tanks Installed
High Pressure Drain Jetting
Mobile Steam Cleaning
Sewage Plant Maintenance
Industrial & Domestic Work Carried Out

Low Hang Bank Depot: **Tel: 01325 377860/377850**
Melsonby
Richmond
North Yorkshire
DL10 5NQ
24/7 Call Out
[Http://www.mwwaste.co.uk](http://www.mwwaste.co.uk)

Clear Your Blocked Drains Fast With Our High Pressure Jetter
Free Quotes & Estimates

REETH AND DISTRICT GAZETTE LTD



Dales Police Crime Bulletin

Crime Figures

06/02/2026-06/03/2026

ADDLEBROUGH

- 1 Crime Violence: Domestic related.
- 1 Concern report
- 2 Abandoned calls.
- 20 Hoax Calls.
- 1 Administration call - Advice given.

BOLTON CASTLE

- 1 Crime/Burglary- theft of tools from an outbuilding.
- 1 Crime/Criminal Damage.
- 1 RTC damage: both drivers exchanged details.
- 2 Abandoned calls - all were made in error.
- 1 Civil Dispute.
- 2 Suspicious reports- 1 Report of a vehicle with hounds, 1 report of a suspicious male who checked out- all in order.
- 1 Sudden death.
- 1 ASB Environmental - report of possible poachers.
- 1 Domestic Incident.
- 2 Highway Disruption incidents.

LOWER WENSLEYDALE

- 1 Highway Disruption
- 1 Highway Disruption
- 2 Road Related incidents.
- 1 Domestic Incident
- 1 Sudden Death
- 1 Abandoned call: made in error.
- 1 Concern reports: Concern for an injured male in the road, he was given medical help.
- 5 Suspicious reports: Person reports suspicious behaviour regarding a

neighbour. 1 Report of 2 suspicious males in a vehicle, there were no further sightings. 1 Report of a suspicious vehicle. 1 Report of a missing dog who was later found not far from his home. 1 Report of shattered glass door, unknown reason as to why the glass smashed.

PENHILL

- 1 Crime/Burglary/Residential- Report of 2 outbuildings broken into.
- 1 Crime Burglary/Business - Theft of tools from an outbuilding.
- 1 Crime Burglary/Business/Community - Theft from outbuilding.
- 3 Abandoned calls: All were made in error.
- 1 Road Traffic Collision- Non-injury 2 vehicle collision
- 1 Road Related Offence- 1 male arrested for Drink Driving.
- 1 Administration - Report of lost/found property.

REETH & ARKENGARHTDALE

- 1 Crime/other- Report of a male causing a nuisance in a public house, later thought to be drink driving.
- 1 Crime/Violence- Report of a neighbour dispute, no further action required requested.
- 1 Crime/Criminal Damage- Report of several quad bikes causing damage on private land.
- 1 Road Related incident- 1 Vehicle Seized due to having no Tax and Insurance.
- 1 Highway Disruption: 1 report of a road rage incident.
- 6 Suspicious reports: 2 Reports of a several vehicles offloading quad bikes, 1 report of a vehicle stuck in mud. 1 Report of a suspicious male who was

REETH AND DISTRICT GAZETTE LTD

checked out and all in order. 1 report of poachers on private land. 1 Report of 2 males requesting information about a resident's vehicle, there were no further details.
1 Wildlife report - report of 4 dogs chasing sheep.

HAWES & HIGH ABBOTSDALE

1 Crime/Theft: Theft of a debit card.
4 Abandoned calls: all were made in error.
2 Civil disputes.
1 Suspicious report: 1 report of suspicious males, no further information received.

LEYBURN

1 Crime/Violence.
1 Crime/Drugs-Person found in possession of drugs.
1 Crime/Burglary/Residential-Investigation ongoing.
2 Road Related Offences: 1 Report of manner of driving. 1 Report of 2 males sighted riding quad bikes.
3 Road Traffic Collision/minor.
3 Highway Disruptions - Temporary lights stuck on red. Vehicle stuck in the snow.
3 Abandoned calls: all made in error.
2 Concern reports: 1 concern report raised for a male who was found safe and well. 1 concern raised for a female who was found safe and well.
1 Suspicious report: 1 Report of doorstep callers.
1 Sudden death.
1 Anti-social behaviour/Personal.
1 Report of a pet dog roaming.
5 Administration reports-Lost/found Property/Pre-planned events.

SWALEDALE

1 Crime/Criminal Damage: 1 report of a

vehicle purposely causing damage to another vehicle.
1 Crime/Domestic Related.
3 Road Traffic Collisions.
1 Road Related: 1 Vehicle reported for carrying quad bikes, 1 vehicle seized due to driver having no driving licence.
3 Abandoned calls: all were made in error.
8 Administration reports.
5 Highway Disruptions- including vehicles stuck in snow and a tree down in the highway.
4 Suspicious Reports- 1 broken down vehicle, 1 report of a dog stuck on a rock, 1 report of a Kayak found in the river and 1 report of an abandoned vehicle.
1 Missing Person report- person found safe and well.

North Yorkshire Police are promoting our messaging system, please sign up today to:

Community Messaging

You can sign up to receive alerts as a member of the public here:

[https://
www.northyorkshirecommunitymessaging.co.uk/](https://www.northyorkshirecommunitymessaging.co.uk/)

Your Local Neighbourhood Team are:

PCSO3521 Diane Smith,
PCSO5550 Tracie Taylor-Paige,
PC355 Heather Campbell.
Email:
diane.smith@northyorkshire.police.uk

Useful Contact Numbers

Highways 03001312131
NHS 111
Local Dog Warden 01748
829100
Action Fraud 0300 123
2040



WANTED!



Well maybe not your country, but the **Reeth Gazette needs you** if you are good with numbers, have some knowledge of Sage Accounting and a few free hours each month. As Treasurer of the Gazette, you'll only need to attend about 4 meetings a year (online if required) and everything else can be done from the comfort of home. You don't even need to live anywhere near Reeth. If you want to help the Gazette survive and flourish, speak to Andrew Bedford 07957 207579



Dog grooming and teeth care in Leyburn

Level 2&3 City & Guilds qualified
Emmi-pet teeth cleaning
Fully insured
One-to-one, quiet setting

Call Sarah on 07739 716344
or find us on Facebook!



FLOOR TILES CLEANED & SEALED

Kitchens Conservatories Hallways Bathrooms Fireplaces

CLEAN & SEAL

Tel: 01748 811452 / Mobile: 07961 460020

Your Floor Tiles Cleaned & Sealed No Fuss No Hassle No Mess All Tiles

Sandstone Terracotta Travertine Slate Flags

Limestone Encaustic Ceramic Marble Vinyl

John Lord

johngrahamlord@gmail.com



Visitor Centre
Open Daily

Calvert's Cheesy Afternoon Tea
New Menu £19pp

Enjoy a range of delicious sweet and savoury dishes featuring our cheese.

Cheese Experience

Children go FREE
Weekends and School Holidays

Keep up to date with Wensleydale Creamery on Facebook and Instagram
wensleydale.co.uk

REETH AND DISTRICT GAZETTE LTD

Leyburn Arts & Community Centre

Yesterday was a beautiful Spring Day, but as I began to write this it started snowing! The top of Penhill is white again. So, looking forward to April even more now!

At the Centre we have a short break at the beginning of April as we do not open over Easter (no Friday film) but the rest of the month has a lot going on - a Fashion Show; Musik, a Cinema Live production starring Frances Barber in a bold & hilarious one-woman odyssey through the 20th & 21st centuries; National Theatre Live, Arthur Miller's All My Sons; Live Music with An Evening with Cathryn Craig & Brian Willoughby - Cathryn was a former studio musician in Nashville & both musicians come with an impressive musical CV; and a Cinema Live screening of popular comedian James Acaster's stage show. The Community Shed is getting busier: you can sign up for their emails, shed@leyburnartscentre.com if you wish to know more, opening days etc. Carers' Plus & Staying Healthy Independent & Connected continue with their regular help sessions. More information can be found on our website or pick up a flyer for cinema & events.

In March we hosted the Wensleydale Tournament of Song and in May we shall host two film screenings for the Swaledale Festival. Our regular Friday films are a mixture of the current popular releases but also films which are not usually shown at other cinemas. For all these events and activities, like all charities LACC needs willing volunteers who wish to support the community activities & local endeavours to keep Wensleydale a thriving community with local support should you need it. If you can spare a few hours a month please get in

touch. Some tasks can also be done at home, particularly if you have website experience. An enquiry does not mean a commitment so just call in or give us a ring to find out more!

Music Tuition for all ages with
www.colinbaileymusic.co.uk
07711 211169

Drums & Percussion; Vocals;
Piano & Keyboards; Music Theory;
'Get Musical' Workshops.

CHAPEL GALLERY

Work from local artists and crafters
Bespoke Workshops Available
Coffee and cakes
Dogs and children welcome

Open daily (except Sundays) 11am to 4pm

Burtersett Road, Hawes, DL8 3NP

Tel: 07474 138536

info@chapelgalleryhawes.com

www.chapelgalleryhawes.com



Yorkshire Dales Accountancy
Chartered Accountants

taxation & business advisors

Providing a broad range of accountancy and taxation services across a variety of sectors, including:

- Accounts • Business Tax • Personal Tax • VAT • Payroll
- Construction Industry Scheme • Capital Gains Tax
- Inheritance Tax • Making Tax Digital

Kiln Place, Dryden House, Market Place,
Hawes, North Yorkshire, DL8 3RA
E: info@yorkshiredalesaccountancy.co.uk
T: 01969 678128
www.yorkshiredalesaccountancy.co.uk

REETH AND DISTRICT GAZETTE LTD



Marie Hartley paintings acquired

A charitable trust has funded the acquisition by the Dales Countryside Museum of three paintings by the museum's founder, [Marie Hartley](#).

Friends of the Dales Countryside Museum sprang into action after hearing that the paintings were being offered for sale. They had belonged to Marie Hartley's helper about the house, Evelyn Cooper, who died last year.

One work was painted from Countersett looking on to Semerwater, another from near Harddraw looking towards Blue Bridge, and the third from the road looking down to Thwaite in Swaledale.

Evelyn's son, James Cooper, said: "It was about 1962 when mother went to work

part time for Miss Hartley and Miss Ingilby - 2 hours a day - when we lived in Askrigg. Once we were packed off to school, mother would go to Coleshouse, wash the breakfast pots, make them coffee and do some dusting around and what have you.

"She was there for a good thirty years. It was always 'Miss Hartley' and 'Miss Ingilby', they were that class of people, and Mother was always 'Mrs Cooper' to them. There were times when I would go to the house, when they were out interviewing for their books or painting, but I wasn't allowed to run about."

Marie Hartley bequeathed to the Dales Countryside Museum her wood engraving blocks, used to illustrate her celebrated and popular books on the Yorkshire Dales produced in collaboration with Ella Pontefract and Joan Ingilby, as well as personal items, sketchbooks and



REETH AND DISTRICT GAZETTE LTD

diaries. However, until now, the Dales Countryside Museum has not had any of Marie's paintings to display.

The paintings are to be hung in the museum's New Time gallery, placed alongside the umbrella Marie used when working outdoors.

Chair of Friends of the Dales Countryside Museum, Martin Garside (pictured with the three paintings), said: "For many years we have played a role in providing financial support for acquisition purchases and match funding for projects - and we were particularly delighted to do so on this occasion, given that the museum is a huge part of Marie Hartley's legacy.

"Everyone will have their favourite but it's hard not to be drawn to the painting of Thwaite in Swaledale, which is expertly composed, full of vivid contrasts, and includes people within it - two men on the bridge, and a woman and child. It was the stories of local people that fascinated Marie Hartley and which led to her founding the collection and the museum."

The Dales Countryside Museum is run by the Yorkshire Dales National Park Authority. Member Champion for Promoting Understanding at the Authority, Neil Heseltine, said: "Marie Hartley perhaps did more than anyone to promote understanding and enjoyment of the Yorkshire Dales. People today still love her books and illustrations; her works continue to inspire people to discover Dales landscapes and people. Thanks to the Friends of the Dales Countryside Museum, we can put these three paintings on display and I'm sure they will be much enjoyed."

D. J. OLNEY
Painter & Decorator
Interior & Exterior
Call
07801 026 006

EDMUND HIRST DRY STONE WALLING
edmundhirstdrystonewalling@gmail.com
07944 228175



R.L.D
ROOFING & BUILDING LTD

Covers all aspects of roofing and building
0737 607 3816 07597 621 287
RLDroofing@mail.com

R.L.G
GROUNDWORKS CONTRACTORS LTD
0737 607 3816
info@rlggroundworks.co.uk
RLGgroundworks.co.uk



Swaledale Festival is holding its Annual General Meeting on Thursday 23rd April at 5.00pm at Hudson House, Reeth and all are welcome to attend.



Sustainable
Swaledale

Sustainable Swaledale

Sustainable Swaledale

Winter 2025/2026 round-up

We rounded off another very productive tree planting season with projects at two sites in Marske, and are incredibly grateful to everyone involved—especially when adverse weather meant that we had to cancel and reschedule tasks at fairly short notice.

We have also come to the end of our hedge laying tasks for this year, having completed a good stretch along the Swale Trail from Low Houses towards Low Whita. Many thanks to the two Peters who shared their knowledge of hedge laying with a large number of volunteers over the season.



Finally, a huge well done to everyone involved in removing more than 11,000 tree guards from the 9 acre woodland at Storthwaite, Arkengarthdale. Our final work day in March marked the culmination of three winters of challenging but very rewarding work; and there was a collective sigh of relief as we dragged the very last full-

to-bursting dumpy bag down the hillside!



Join us for Himalayan Balsam training

Fancy learning the art of Himalayan Balsam mapping and removal? Join Martha McBarron and the Yorkshire Dales Rivers Trust at Dalton near Richmond, where the area covered by this invasive species is equivalent to 11 Wembley Stadiums!

Spots of balsam have already been identified along the Swale, generally extending from Crackpot downstream. This training will show us how to map it and tackle it—either as a series of group tasks, or as individuals taking charge of small clumps.

Training would run from 10am-2pm on a date in late May/early June, with lunch in the local village hall. Please register your interest via info@sustainableswaledale.org and let us know whether weekdays or weekends would be better for you.

Visit to Westfields & Nine Acres Field with Richmondshire Landscape Trust

The group has been offered the chance for a free guided tour around some of the sites in Richmond owned and managed by the Richmondshire

REETH AND DISTRICT GAZETTE LTD

Landscape Trust. It would cover Westfields, the only surviving remnant of Richmond's Medieval open field system; and Nine Acres Field, which has been converted to a wildflower meadow with help from Buglife and also has areas under woodland management. The tour is scheduled to take place on the afternoon of Saturday 18th April and is suitable for families. There are 12 spaces available. Please sign up by email to info@sustainableswaledale.org.

World Curlew Day Art & Poetry Competitions

The 21 April 2026 is the tenth World Curlew Day and conservation group Curlew Action is marking the anniversary with two 'celebratory' themed competitions for art and poetry—including categories for Primary School, High School, and Adult. Prizes for the Adult and High School category will be a pair of Curlew socks of a new design, and a new Curlew colouring book for the Primary School age category entrants. Your design will also be featured on Curlew Action's social media, website, and possibly in other places in the future.

The deadline for entries is midnight on 10 April 2026, and winners will be revealed on World Curlew Day. Please confirm which category you are entering when you send your entry to flo@curlewaction.org.

Plans for every community to own a local energy project

Great British Energy has recently issued its Local Power Plan which sets out a clear vision and plan to revolutionise the UK's local and community energy sector. Their vision

is that by 2030, every community in the UK will have the opportunity to benefit from, and own, a local energy project. More details can be found on the UK Gov website: <https://tinyurl.com/2nvupcw5>

Sustainable Swaledale Group

Find out more and join in...

Email: info@sustainableswaledale.org

Phone: 01748 886 381 (Secretary)

Facebook Group:

[Sustainable Swaledale](https://www.facebook.com/SustainableSwaledale)

Website:

www.sustainableswaledale.org

Sign up to our free newsletters, and choose to support us as a member for £10 (£5 concessions) per year.

07.05.26
COMING SOON

An exhibition of my photography
@thestation
sophietarran88@gmail.com
07375 243616

Fernbank
Flowers
PHOTOGRAPHY

@FERNBANK_FLOWERS

Business Boost as Coast to Coast becomes a National Trail

Businesses along the route of the famous Coast to Coast Path are hoping for a boost following the route being given National Trail status in March

The 192 mile route, which runs from St Bees in Cumbria to Robin Hood's Bay in North Yorkshire, attracts thousands of walkers and cyclists each year. Its new designation as a National Trail is expected to increase visitor numbers further, bringing fresh economic opportunities for accommodation providers, cafés, pubs and local attractions.

It was announced in December last year that 16 elected members contributed funds from our locality budget programme to support the Coast to Coast Passport scheme.

Each of our 90 members has a budget of £5,000 each year to respond to local needs by allocating small amounts of funding to support activities to promote social, economic, or environmental well-being in the communities which they represent.

Funding can be used for projects or undertaken by external organisations or for additional services provided by the council. Each member is responsible for determining how they wish to seek approval to promote and use the money from their locality budget.

The pocket-sized passport has about 140 pages packed with useful information about places along the route alongside special offers from participating shops and retailers. Holders can get stamps from places

they call into along the way.

Council chair, Cllr George Jabbour, is passionate about the path and the benefits it brings to both those who tackle it and the businesses along its route.

He said: "I met many of the enterprising business owners last year when I completed the walk and I know how important the custom of those who pass by is.

"Tourism is the lifeblood of our communities, supporting jobs and strengthening the local economy across the county.

"It's fantastic to see people experiencing those benefits close to home, and I'm confident the Coast to Coast's new national trail status will bring even greater opportunities."

The owners of the Dales Bike Centre at Fremington deliberately sited their business on the route of the Coast to Coast Path.

The family-run business has been open for over 17 years and includes cycle

hire and a bike shop, café and accommodation.

Brenda Price, a partner in the business, said: "As well as promoting the Dales Bike Centre to cycling visitors we understood being on the Coast to Coast route would add additional bed nights into our bunk accommodation.

"More recently as we've expanded with four new glamping pods, we offer single night stays with Coast to Coast visitors in mind."

Brenda said the business engages with Coast to Coast participants on a daily



REETH AND DISTRICT GAZETTE LTD

basis.

She said: "It may be accommodation guests from all over the world staying with us, the interesting chat over breakfast about their part of the world and their experience of the Coast to Coast route.

"It may be supporting the various running and cycling events by hosting feed stops for those completing journeys from St Bees to Robin Hood's Bay.

"The people we meet and engage with really are wonderful, many have returned time and time again, some have become lifelong friends and supporters of the business.

"It really is a joy to be a tiny part of their experience journeying from Coast to Coast."



Bed and Breakfast, Reeth Road near Downholme. Spacious en-suite rooms in a peaceful location with panoramic views of Swaledale.

Traveller Review Award 2026
ellertonlodge13@yahoo.com
tel 07812 632459

YORKSHIRE FOOT CLINICS

Podiatry/Chiropody
Alex Kravchenko MChS, BSc Pod (Hons)
Nail cutting, callus, corns & ingrowing nails
All treated in the comfort of your home

Tel. Richmond 850020
Or Hawes 667449

Always insist on state registered



SCENICVIEW GALLERY - Reeth

Original Landscape Photography

Showcasing the dramatic beauty of Swaledale, the Yorkshire Dales, and beyond.

- Right in the heart of Reeth
- Framed and mounted prints, plus greetings cards
- View the full range at:
www.scenicview.co.uk
- Pop in and explore - dogs welcome

Dales Reyno-Vations



General Building & Maintenance

- Property renovations / Roofing
- Kitchen fitting / Joinery
- Bathroom suites / Tiling
- Painting & Decorating
- Patios / Landscaping / Ground maintenance
- Free estimates / Insurance quotes

No Job too small

D Reynoldson

11, Place Hill, Reeth, Richmond
North Yorkshire, DL11 6SD
01748884309 / 07792458801

Email: david.reeth1@outlook.com



Reeth Memorial Hall

Reeth Memorial Hall

Saturday 18th April - The Haar
Anglo/Irish quartet with a radically fresh, boundary-pushing take on traditional songs and tunes.
Tickets **£20** (£22 door).

Saturday 25th April - Rosie Hood Band

Reworked traditional English songs and original material, touching on nature, human struggle, women's voices and unheard stories. Powerful and clear vocals, with melodeon, fiddle & percussion.
Tickets **£17** (£19 door).

Saturday 02nd May - The Bar-Steward Sons of Val Doonican

Bar-Stewardized parody versions of well-known songs on folk instruments with new satirical comedy lyrics, by a band known for their stylish choice of sexy knitwear and no-holds-barred, anarchic live shows.
Tickets **£20** (£22 door).

Tickets for concerts are available from Reeth PO or phone Glen Steward (01748 884989) or visit www.reethmemorialhall.weebly.com - tickets $\frac{1}{2}$ price u16s.

All concerts 8pm unless otherwise stated - doors 7.30pm

Glen Steward

Heart and Craft

Creativity, community and conversation

Join our friendly creative sessions

Every fortnight

Tuesdays 7th and 21st April

10am - 12pm Low Row Institute

2pm - 4pm Arkengarthdale Hub

Tuesdays 14th and 28th April

10am - 12pm Muker Public Hall

Thursdays 2nd, 16th and 30th April

2pm - 4pm Reeth Memorial Hall

Free - Everyone Welcome!

Our workshops are relaxed, sociable, led sessions with regular guest artists. No experience or talent needed - all materials are provided. Come for the creativity, stay for the chat, and enjoy a cuppa (and usually a biscuit or two!) in good company.

Free transport available through Reeth & District Community Transport

For more information:

Call 07513 635175 or Lowrowinstitute.co.uk

Funded by The National Lottery **COMMUNITY FUND**

McGarry & Co

SOLICITORS



Local Knowledge & Practical Advice

Your Legal Companion

- PROBATE & ADMINISTRATION
- WILLS
- AGRICULTURAL MATTERS
- POWERS OF ATTORNEY
- NURSING & RESIDENTIAL HOMES
- LAND TRANSACTIONS

Offices At: *Barnard Castle* *Haaves*

mbmcgarry.co.uk	t. 01833 600 160	t. 01969 666 290
e. office@mbmcgarry.co.uk	DL12 8EQ	DL8 3QS



The Bridge Inn, Grinton

The Bridge Inn-Grinton is a charming old coaching inn, situated on the banks of the River Swale. We offer a warm welcome to families and dogs, serving, hearty pub food and cask ales.

With en suite accommodation available, our guests can enjoy various activities including playing traditional board games and darts.

Open 12pm until closing time. Serving food until 8:45 pm. It is recommended to book in advance to avoid disappointment.

Booking is available directly or on Booking.com. For more information, call 01748 884224 or visit our [Facebook page](#) [The Bridge Inn-Grinton](#).



Swaledale Footcare

Meg Squires MCFHP MAFHP

**Clinic Visits at Thornborough Hall Leyburn or
Home Visits Including:**

Toenail Cutting

Corn Treatment

Removal of Hard Skin and Calluses

Treatment of Thickened and Fungal Nails

Phone : 01748 884795 or Mobile: 07929065602

Email meg.e.squires@gmail.com

Member of the British Association of Foot Health Professionals



Orchard Caravan Park

Idyllic setting in the market town of Reeth, nestled next to the river Swale in the heart of beautiful Swaledale.

Orchard Caravan and Camping Park is the ideal location for a tranquil and relaxing break, or for those who seek an active holiday to enjoy walking and biking.

Static Caravan Hire

Camping pod hire

Touring, motorhome & Camping welcome

Email: Office@Orchardcaravanpark.com

Facebook: [@Orchardcaravanparkreeth](https://www.facebook.com/Orchardcaravanparkreeth)



REETH AND DISTRICT GAZETTE LTD



**Saturday 23 May – Saturday 6 June
2026**

Highlights in Reeth, Grinton... and beyond!

Whether you're a resident or a visitor seeking a vibrant burst of culture in the spectacular spring Dales, the 2026 Swaledale Festival promises a kaleidoscope of music, art and discovery.

Alongside world-class concerts, you'll find compelling visual art, thought-provoking film and literature, hands-on creative workshops, and a rich programme of guided walks exploring the landscapes and stories that make the Northern Dales so special.

Head to www.swalefest.org to book your tickets!

Reeth Day – Saturday 23 May A celebration of people, place and culture

We open the 2026 Festival with a feast of music, talks and film rooted in local Reeth life. Book one event, or make a day of it and enjoy them all!

At 11.30am in Reeth Congregational Church, enjoy music from violinist **Jo Lawrence** and lutenist **Susanna Pell** who present a fresh new take on a century-old poem in a delightful musical adventure for all the family.

From **12noon to 3pm in Reeth Memorial Hall**, drop in for a series of fascinating 30-minute talks from local groups and experts, offering insight into the history, landscape and community of our dale. Contributors

include the **Swaledale and Arkengarthdale Archaeology Group**, land management specialist **Robert Frewen**, **Swaledale Mountain Rescue**, and **Sustainable Swaledale**.

At **3.30pm back at Reeth Congregational Church**, enjoy an afternoon gig featuring singer and guitarist **Ian Anderson**, multi-instrumentalist **Roger Jones**, and close-harmony trio **The Pearls** in a special musical gathering.

Round off the afternoon with the premiere of a specially commissioned film exploring Swaledale's cultural life, past and present: **A Concert Party with Marske Choir in Reeth Memorial Hall at 5pm**. Lindsay Ibbotson, conductor of the choir, says: "Members of Marske Choir have been talking to locals up and down the dale, gathering memories of Swaledale's cultural life and teaming up with those who are out there and at it these days. The result is a film featuring interviews with well-known figures from the local music scene, alongside a recreation of the traditional *Concert Party* - a community variety show where contributors perform their own talents. Expect music, comedy, Swardle dialect, and a few surprises, all celebrating the spirit of people coming together. Join us and be part of this special occasion!"

Leyburn Band at Bolton Castle Monday 25 May 3.30pm, Bolton Castle

Set against the magnificent backdrop of Bolton Castle, the award-winning Leyburn Band performs a programme of greatest hits and classic brass band

REETH AND DISTRICT GAZETTE LTD

favourites: a Festival treat for all ages in a truly stunning setting.

A Special Day at The Georgian Theatre Royal, Richmond Wednesday 27 May

**Sally Coulthard: The Wildlife Year
11am-12noon**

The bestselling author and columnist (right) reads from her book **The Wildlife Year: How to Reconnect with Nature Through the Seasons.**

Drawing on over two decades of writing about nature, history and craft, Sally offers an inspiring guide to rediscovering the rhythms of the natural world.

**All-Age Musical Seasons Safari
2.30-3.30pm**

Multi-instrumentalist **Eleanor Grant** - known for her appearances in *Avatar Live in Concert* across Europe and Asia - joins three outstanding musicians: percussionist **Delia Stevens**, violinist **Fenella Humphreys** and accordionist **Valerie Barr**, for a sparkling afternoon exploring the magic of the seasons. Featuring excerpts from **Vivaldi's The Four Seasons** alongside other musical gems, this captivating concert is perfect for all ages, from those who have never experienced live music to seasoned aficionados.



music of world-renowned violinist **Fenella Humphreys**, performing live amid the breathtaking wildflower meadows of Gunnerside. Hear a superb musician in the open air, paint a live art form, and receive expert guidance, all in a meadow in its golden glory ("plein air" means painting outdoors!)

Stir the Air: Creative Writing for All Ages - Saturday 30 May 2-3.30pm

Hawes, Dales Countryside Museum Local writer Beth Daley leads an imaginative and relaxed creative writing workshop inspired by music, imagery and the changing world around us. Open to all ages from five years old to one hundred and five years young!

"I'm excited to be exploring nature and the seasons in this wonderful rural location," says Beth. "Everyone is welcome, whether they are experienced writers or are new to putting thoughts into words. It's an informal and friendly workshop, with no obligation to share or read. The emphasis is on discovery and enjoyment, and giving participants a range of ways to get started with any piece of writing."

The Reeth Lecture: Alison O'Neill - Saturday 30 May 2pm Reeth Memorial Hall

The celebrated shepherdess with a mega social media following **Alison O'Neill** reflects on the seasons of the year and the seasons of life, describing the "labour of love" that shapes her unique way of life on a hill farm in the Dales.

"I work quietly in the old way, woven to my landscape, betrothed to the life of a shepherdess. I don't like sheep, I love

Creative Workshops

Plein-Air Painting: Life in the Meadow - Friday 29 May 10.30am-4.30pm Gunnerside Village Hall

Brilliant artist **Martin Lever** invites painters to capture the movement and

REETH AND DISTRICT GAZETTE LTD

them and I always have. I care for my flock and in turn they provide for me. I fashion their wool creating beautiful products, offering provenance and heritage as hallmarks for every item I produce. I enjoy sharing my world." - Alison O'Neill

Epic Evenings Out

**The Future is Ancestral
Thursday 28 May 7.30pm Grinton, St Andrew's Church**

Experience the artistry of Suntou Susso (below): singer, percussionist and master of the kora, West Africa's 22-string harp that has carried the soul of Mandinka culture for centuries. A powerful and atmospheric evening in a beautiful setting.



**Clare Teal - Saturday 30 May
7.30pm Leyburn, The Garden Rooms
at Tennants**

The masterful singer and broadcaster brings her signature silken-voiced style

to a Festival Saturday night: sophisticated, soulful and effortlessly entertaining.

**Rachel Parris - Thursday 4 June |
7.30pm | Leyburn, The Garden
Rooms at Tennants**

Award-winning comedian and musician Rachel Parris (below) (*The Mash Report, Live at the Apollo*) delivers razor-sharp wit, inventive satire and glorious musical comedy in what promises to be a sell-out evening.



**Mishra + Deepa Shakthi
Saturday 6 June | 7.30pm | Grinton,
St Andrew's Church**

Global folk collective Mishra join forces with international fusion and Sufi vocalist Deepa Shakthi to close the Festival with infectious style, rich rhythms, dazzling musicianship and beautiful energy.

Join us and make Swaledale Festival part of your spring in the Yorkshire Dales!

Full programme and tickets:
www.swalefest.org

Diary Dates

April

Wed 1st Apr - Workout Wednesday, Low Row Institute, 6.30pm and 7.45pm £8 per class

Thur 2nd Apr - Heart and Craft , Reeth Memorial Hall, 2pm

Fri 3rd Apr - Good Friday Walk Keld to Grinton with Church services.

Sat 4th Apr - Easter Family Fun Day, Reeth EC Church 2-3.30pm

Sun 5th Apr - Free Concert, Muker Silver Band, 2 pm Muker Hall, retiring collection in aid of Macmillan Support.

Tues 7th Apr - Heart and Craft, Low Row Institute, 10am and Arkengarthdale Hub 2pm

Wed 8th Apr - Workout Wednesday, Low Row Institute, 6.30pm and 7.45pm £8 per class

Thur 9th April - Coffee Moening, Low Row Institute 10am–12 noon.

Sun 12th Apr - Yoga for All at Low Row Institute 1030am, £10, www.lowrowinstitute.co.uk

Tues 14th Apr - Heart and Craft, Muker Public Hall, 10am

Wed 15th Apr - Workout Wednesday, Low Row Institute, 6.30pm and 7.45pm £8 per class

Thur 16th Apr - Heart and Craft , Reeth Memorial Hall, 2pm

Sat 18th Apr - The Haar, Reeth Memorial Hall

Sat 18th Apr - Coffee morning 10-12 noon, Reeth Evangelical Church

Tues 21st Apr - Heart and Craft, Low Row Institute, 10am and Arkengarthdale Hub 2pm

Wed 22nd Apr - Workout Wednesday, Low Row Institute, 6.30pm and 7.45pm £8 per class

Sat 25th Apr - The Rosie Hood Band, Reeth Memorial Hall

Sat 25th April - Swale Singers perform Requiems by Faure and Durufle at St John's Church, East Whitton, 7pm

Tues 28th Apr - Heart and Craft, Muker Public Hall, 10am

Wed 29th Apr - Workout Wednesday, Low Row Institute, 6.30pm and 7.45pm £8 per class

Thur 30th Apr - Heart and Craft , Reeth Memorial Hall, 2pm

May

Sat 2nd May - The Bar Stewards Sons of Val Doonican, Reeth Memorial Hall

Sat 2nd May - Jazz Night - Saturday 2nd May 2026 - The Good Vibes Trio + 2 -course evening meal

@ The Station CafeBar, Richmond to book Call 01748 825967 or email reservations@thestation.co.uk

Sat 16th May - Coffee morning 10-12 noon, Reeth Evangelical Church

Thurs 21st May - TLC@Gunnarside Learn card-making skills with Emma Trussler 7.30 Gunnarside Village Hall.

Fri 22nd May - Over the Moon, Reeth Memorial Hall

June

Fri 26th Jun - Lino Printing Workshop, Low Row Institute 9-1pm

Sat 27th Jun - Low Row and Feetham Open Gardens

July

Sat 25th Jul - Lino Printing Workshop, Low Row Institute 9-1pm

The Gazette is online:
www.2dales.org.uk

REETH AND DISTRICT GAZETTE LTD



Dreaming of your own holiday lodge or caravan in the Yorkshire Dales?

Swaleview Park is a family-owned retreat in Swaledale, established in the 1930's!

Open all-year round, less than 3 miles from Richmond - countryside & river views.

info@swaleviewpark.co.uk
01748 823106 | 07736 820283
www.swaleviewpark.co.uk
Facebook & Instagram:
SwaleviewPark

Remedial Massage
musculoskeletal conditions & injuries, headaches, stress and anxiety
Manual Lymphatic Drainage
lymphoedema, post-surgery

Jennifer Thursfield NAMMT MLDUK CNHC
Tel: 07889 546608 • Based in Richmond
jtremedialmassage@gmail.com
www.jtremedialmassage.co.uk

STURDY TRAVEL

INDEPENDENT TRAVEL SPECIALISTS

Now at 1 Golden Lion Yard
Market Place, Leyburn DL8 5AS

For all your travel needs, home and abroad

Call: 01677 422826

Email: robert@bakewelltravel.co.uk



Part of Bakewell Travel



PROPERTY MAINTENANCE

General Building Work, Dry Lining, Decorating, Electrical Work, Kitchen Fitting, Joinery, Paving, Garden Maintenance, Roofing, pointing & guttering work. Small jobs welcome.

Free estimates.

Contact Martin or Django

Tel 01748 886 465 Mob: 07813 715 120

Email: martinkiss1960@gmail.com



OVERDALE STUDIO & GALLERY

The work of international award-winning Artist Martin Lever



MARRICK
nr REETH
DL11 7LQ

Viewings by appointment only

07513072773

martin@artbymartinlever.com

artbymartinlever.com

