

REETH & DISTRICT GAZETTE

ISSUE NO. 337

JULY 2024



*Your local news magazine
for the two dales*

PRICELESS

REETH AND DISTRICT GAZETTE LTD

First thoughts

It seems we are having a flurry of anniversaries this summer, with many of our local businesses and institutions celebrating their longevity. How fortunate we are that there is so much going on in our area, and, it seems, many dedicated people to keep it so.

We now have collecting boxes in place for the Reeth Gazette, thereby hopefully encouraging people to drop in a few coins when they pick up a copy. The boxes are in: Reeth Post Office, Gift Shop in Reeth, Punch Bowl, CB Inn, Red Lion, Hudson House, plus the Tea Shop, Old School Gallery and Swaledale Woollens in Muker. Many thanks to the owners of these businesses for giving the boxes a home. The recently emptied box in Reeth Post Office yielded £70.20, so it is certainly worthwhile. If your business could host a box please get in touch with the Treasurer,

Jackie



**Bespoke
Tutors**

**Maths, Science,
English Private
Tutors**

Gaynor Voice & Kate Roxburgh

Brown Hill Top
Low Row
Richmond
DL11 6NB

Tel. 01748 886201

Email: bespocketutors@gmail.com

www.bespocketutors.org.uk

**The Gazette is online:
www.2dales.org.uk**

Hudson House

Your valuable community asset
Rooms for hire

Suitable for meetings, lectures, talks,
training or social events.

The Meeting Room - maximum of 30
people.

The Meeting Place (evenings only) -
maximum of 10 people.

Access to PCs, Internet, printer, photo-
copier, laminator and kitchen facilities.

The Orchard Gallery for hire

Suitable for exhibitions of paintings,
photographs and other artwork.

Own entrance through the garden.

Sales can be handled for you.

For prices (special rates for community use),
bookings or more information please

contact **Jill May** on **01748 884 485** or
admin@hudsonhouse.info



Serving food between 12pm & 8pm everyday

Free to join loyalty scheme

No Table Reservations

Amazon, BT Sports & Sky Sports on 3 TV's

Pool Table & Dart Board

Pet Friendly

Monthly Quiz

Occasional Live Music

Warm Welcome

Cask Marque accredited & CAMRA discount

www.thebuckreeth.co.uk

Tel 01748 884 545

Email stay@thebuckreeth.co.uk

REETH AND DISTRICT GAZETTE LTD

Gazette Management Team

Chairman: Susan Miller

Longstone, Low Row, Richmond
DL11 6NA

Tel: 01748 886 358

E-mail: chairman@reethGazette.co.uk

Secretary: Sue Alderson

Holme View, Low Row, Richmond,
DL11 6PE

Tel: 01748 886 292

E-mail: secretary@reethGazette.co.uk

Editor: Jackie Pope

Guildy Hall, Muker, Richmond,
DL11 6QG

Tel: 07885 498676

E-mail: editor@reethGazette.co.uk

Treasurer: Andrew Bedford

Glory Be, Blades, Richmond, DL11 6PS

Tel: 01748 886 974

E-mail: treasurer@reethGazette.co.uk

Subscriptions: Elsie Whitehead

5 Place Hill, Reeth, Richmond,
DL11 6SD

Tel: 01748 884 132

E-mail: subscription@reethGazette.co.uk

Distribution: Trevor Brown

The Cottage, Healaugh, Richmond,
DL11 6UA

Tel: 01748 884 111

Published by

The Reeth & District Gazette Ltd.

Company Number: 06541854

c/o The Company Secretary

Andrew Bedford, Glory Be, Blades

Richmond, North Yorkshire DL11 6PS

Tel: 01748 886 974

E-mail: treasurer@reethGazette.co.uk

No material may be reproduced in whole or in part without permission. Whilst every care is taken for accuracy, the publishers cannot be held legally responsible for any errors or opinions in articles, listings or advertisements.

ADVERTISING

For information on advertising and prices, please contact the treasurer. Advertising copy, should be sent to the editor.

The editor reserves the right not to publish any advert or article considered to be inaccurate or misleading.

All articles or items for inclusion should be sent to the editor
E-mail: editor@reethGazette.co.uk
or left at Reeth Post Office.

The Editor welcomes feedback

At the editor's discretion, your feedback will be published with Editor responses as appropriate.

Please send feedback to
editor@reethGazette.co.uk

Gazette Deadlines

The deadlines for the next two months are:

August issue: July 9th

September issue: August 13th

Posting The Gazette

To post a copy of this Gazette to a friend or relative will require a Large Letter size and will cost £2.10 second class, or £2.90 first class.

PLEASE NOTE: We will endeavour to publish all suitable items submitted by the deadline date but this cannot be guaranteed and is at the sole discretion of the editor.

REETH AND DISTRICT GAZETTE LTD



nh flooring

The Carpet & Flooring Specialist

- Amtico
- Karndean
- Panaget
- Brintons
- Westex
- & more

• Carpets • Wood Flooring • Laminates
• Vinyl Tiles • Vinyl Sheets • Rugs • Accessories

nicf
national institute of carpet & floorlayers

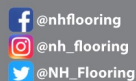
Contact us now for a **FREE** quote, advice or more information

t: 01748 822834 m: 07789 996526

e: enquiries@nhflooring.co.uk

w: www.nhflooring.co.uk

Unit 6 Borough Court, Borough Road, Gallowfields Trading Estate, Richmond. DL10 4SX



SALES - LETTINGS - MANAGEMENT
FREE 'NO OBLIGATION' MARKET APPRAISAL AVAILABLE UPON REQUEST

6 Bridge Street Bedale DL8 2AD 01677 422282 bedale@ normanfbrown.co.uk	14 Queens Road Richmond DL10 4AG 01748 822473/822967 richmond@ normanfbrown.co.uk	25 Market Place Leyburn DL8 5AS 01969 622194 leyburn@ normanfbrown.co.uk
---	---	---

www.normanfbrown.co.uk

REETH AND DISTRICT GAZETTE LTD

Information Centre and Shop at Hudson House

The Information Centre has been up and running now for two months with visitor numbers increasing as we get nearer the summer. We have built up the range of items we sell concentrating, where we can, on locally made items. If you have anything that you think would interest visitors please get in touch with us at Hudson House.

At present we are opening when volunteers are available to suit their own commitments. We would welcome people who would like to help and enjoy talking to people about the two dales. We get asked a huge range of questions by visitors that can provide material for a bit of research. Recent visitors have asked about the mill that was a power station in Reeth, and where the drover's roads are in the dale. Other visitors want to know what scenic drives they can take from Reeth. We endeavour to encourage visitors to see what the dales have to offer and to come back again.

Please contact Jill May at Hudson House if you are interested in helping and come in and see what can be done.

Watch out for our new signage and colourful feather flags coming soon.

Nick Caldwell
Chair, Hudson House Limited

Bellegreen Holiday Cottage

Overlooking Reeth Green
Sleeps 7 in 4 bedrooms

www.bellegreen.com
Keith@bellegreen.com
0115 922257



YOUR INVITE
to a bespoke event in Reeth
Organised by Cancer Research UK
Monday 22nd July
Hudson House 11am – 2pm

Join us to find out more about the developments at Cancer Research UK and what has been achieved with your help over the last 40 years.

Find out about research happening right here in **Yorkshire** and the **North-East**

Guest speakers will share with you how **Gifts in Wills** are powering progress and making vital breakthroughs happen.

We will showcase some weird and wonderful gifts that have been left to CRUK and have made a difference in the lives of so many people, **now and for future generations** to come.



Light refreshments will be served throughout the day.

For further information and to book your free place/s email June Ashton at pinktoberinthedaes@gmail.com



Together we are beating cancer.

J. N. & E.

Capstick

INSURANCE CONSULTANTS LIMITED

WINNER
CIR COMMERCIAL
INSURANCE
AWARDS 2017
BROKER CLAIMS TEAM
OF THE YEAR

Specialising in farm,
home and motor
insurance



A local company, small enough to care, big enough to compete. So give us a try.

36 Main Street,
Sedburgh
LA10 5BP
Tel: 015396 20124
Fax: 015396 20791

Market Square,
Kirkby Stephen
CA17 4QT
Tel: 017683 72285
Fax: 017683 72346

Hawes Auction Mart
Burtersett Road, Hawes
North Yorkshire DL8 3NP
Tel: 07498 041 187
Open during auction hours

www.capstickinsurance.co.uk

J.N. & E. Capstick Insurance Consultants Limited is authorised and regulated by the Financial Conduct Authority

REETH AND DISTRICT GAZETTE LTD

Keld Resource Centre

Events for July and August

7th Jul - Exploring Kisdon Hill
10:30am - 14:30pm Meet outside
Keld Resource Centre

A high-level circumnavigation and crossing of Kisdon Hill outward via the Corpse Route and returning via the Pennine Way. Please bring packed lunch. Distance: approx 4 miles. Rating: Moderate as some steep hillside paths. Dogs welcome on leads. Charge £7.50 pp

14th Jul - Landscape Felting Workshop
10:00am - 15:30pm Keld Resource Centre

Learn how to make a unique felted landscape, with Louise Curnin, inspired by the spectacular scenery of the Upper Dale. Please bring a packed lunch. Refreshments provided during the day.

Charge £55 pp to inc all materials

21st Jul - An Afternoon with Bob Guy
14:00pm - 16:00 pm Keld Resource Centre

Lifelong Swaledale resident Bob Guy will be remembering his early years farming up on Oxnop Pass as well as his work as a builder. Expect funny anecdotes.

Afternoon teas served afterwards
Charge:£10 pp

3rd Aug - Great Sleddale Hurricane Crash Site Walk
10:30am - 16:00 pm

Visit the isolated crash site of a WWII Hawker Hurricane in Great Sleddale. Please wear appropriate footwear as no bridges and need to cross the beck several times. Please bring packed lunch and drinking water. Dogs welcome on leads.

Approx 9 miles. Rating: Moderate to

hard walk. Meeting point: B6270 at the turn off to Ravenseat, approx. 2 miles west of Keld. (what3words://snoozing.embers.outs) Charge £7.50 pp

9th Aug - Family History Research Workshop
13:00pm - 16:00 pm Keld Resource Centre

Linda Blenkinsop will share her hints and tips on researching your ancestors. Examples of her own family trees available, as well as a template to start your own family tree.

Refreshments available Charge: £15.00

18th Aug - From Horse Power to Tractor
16.00 pm - 18.00 pm: Keld Resource Centre

Public talk by local farmer Chris Calvert on the history and development of horse power in traditional dales farming. There will also be an opportunity to see two of Chris's vintage tractors. Charge: £10.00

Full details and tickets available via
Ticket Tailor, or

Email helenguy47@gmail.com

Booking essential due to limited places
for some events

Friends of Marrick Annual Strawberry Tea



Sunday 21st July 3pm

Music from Reeth Brass Band

Delicious teatime treats & raffle

Supervised children's activities.

Fun for all the family



Admission free ...donations gratefully
accepted



Marrick Priory



TALL TREES LANDSCAPES

HARD LANDSCAPING
TREE SURGERY
GARDEN DESIGN
GARDEN MAINTENANCE

Fencing & Gates, Decking, Walling, Paths
Driveways, Groundworks, Drainage
Gabions, Sleepers, Turfing
Tree Planting, Pruning, Removal
Hedge Cutting, Stump Grinding.

If it's not on the list, get in touch
anyway and we will try our best to help.

Phone Tom Hollingworth on

07929322227

Talltreeslandscapes.co.uk

Talltreeslandscapes@hotmail.com

REETH & DISTRICT
COMMUNITY LUNCHEON
CLUB ON THE 11TH
JULY 2024 FOR
1.00PM AT THE
"BLACK BULL" IN
REETH

REETH COMMUNITY LUNCHEON CLUB

WOULD WELCOME BOTH NEW AND EXISTING MEMBERS TO
ENJOY A TWO/THREE COURSE LUNCH WITH TEA/COFFEE
INCLUDED. PLEASE JOIN US FROM 12.30PM FOR 1.00PM.

PLEASE NOTE :- IT'S ESSENTIAL TO BOOK

£16.00/£22.00 2/3 COURSES

[IN COLLABORATION WITH HUDSON HOUSE]

The Black Bull

Reeth's Oldest Inn, serving a range of Real Ales

Comfortable en-suite
accommodation,
Traditional Pub Fayre served daily
Sunday Carvery (booking advised),
Coaches welcome

Tel: 01748 884 213,
Email: bookings@theblackbullreeth.co.uk,
Black Bull, Reeth, DL11 6SZ,
www.theblackbullreeth.co.uk



Open Daily from 11am



Hedgerow legislation now law

The **Management of Hedgerows (England) Regulations 2024** came into law on 23 May. The regulations provide for a two metre 'buffer strip' from the centre of hedgerows with no cultivation or application of pesticides or fertilisers, and a hedge cutting ban between 1 March and 31 August to protect nesting birds. Some exceptions exist and a summary and links to further information can be found at: <https://tinyurl.com/4fn7jcvj>

The legislation is available at: <https://tinyurl.com/3u7wfr28>.

People's Trust for Endangered Species (PTES) are running the **Great British Hedgerow survey**. The survey has been designed for both land managers that may want to improve the structural condition of their own hedgerows, and also for interested wildlife groups that want to assess the quality of habitat in any particular area. The survey can be done between April and October.

The data will be collected in order to give PTES a good overview of the condition of hedgerows nationally. Information available on the PTES website:

<https://tinyurl.com/yhy962yn>

National Meadows Day

Visit a local meadow on **National Meadows Day 6 July** to see the full

glory of upland meadows. The Yorkshire Dales National Park contains a large proportion of the national upland hay meadow habitat centred around Langstrothdale, Ribblesdale, Swaledale and Arkengarthdale. Found in areas with a history of non-intensive hay-meadow management at 200-400m altitude in the upland valleys of northern England, upland hay meadows include sweet vernal-grass, wood crane's-bill, pignut, great burnet and lady's mantle. The meadows provide an important feeding habitat for a wide range of bird and insect life.

Good examples can be found at Gunnerside Bottoms, the Muker Meadows and Yellands Meadow Nature Reserve. Check out a Yorkshire Dales Millennium Trust **walk through the Muker Meadows** at: <https://tinyurl.com/kdkzrat8>.

Tees-Swale: naturally connected is also sponsoring a **National Meadows Day at Hazel Brow Farm on Sunday 7 July 2024** 11am-3pm. The event is free but places should be booked at <https://www.ticketsource.co.uk/teesswale>

Progress on Hawes to Garsdale multi use trail

The Yorkshire Dales National Park Authority (YDNPA) have reported that they are making good progress on a **walking/cycling/horse riding trail** making use of the old railway line between Hawes and Garsdale. More information at: <https://tinyurl.com/58tpvy8y>

REETH AND DISTRICT GAZETTE LTD

Save our Swale talk: new date 1 August 2024

This is a rearranged date because of the use of the venue for polling on 4th July. Deborah Meara and Keith Thomas of **Save our Swale** will be speaking on 1st August at Gunnerside Village Hall at 7pm. The talk will be preceded by a short film.

The speakers will talk about Save our Swale: who they are, what they do, and some results of water sampling along the Swale. The event is free and all are welcome. Refreshments will be available to purchase and there will be a raffle.

Swaledale Farming Film & Photography Festival

Last chance to catch the third Swaledale Farming Film and Photography Festival sponsored by Tees-Swale: naturally connected. The free event at the Station Cinema, Richmond on 10th July will showcase a selection of UK farming films including the newly-released 2024 film 'Six Inches of Soil', a film following the inspiring story of British farmers standing up against the industrial food system and transforming the way they produce food - to heal the soil, benefit our health and provide for local communities. A photography exhibition can be viewed at The Station, Richmond between Thursday 4 July (1pm) and Wednesday 17 July 2024 (3pm).

These events are free but should be booked at <https://www.ticketsource.co.uk/teesswale>.



Swaledale meadow near Gunnerside

Margaret

Sustainable Swaledale Group

Find out more and join in:

Meeting: first Thursday of the month at 7pm. Please contact us for venue details.

Email: info@sustainableswaledale.org

Phone: the Secretary on 01748 886 381

Facebook Group:

Sustainable Swaledale

Website:

www.sustainableswaledale.org where you can sign up to our free newsletters, and choose to support us as a member for £10 (£5 concessions) per year.

R.L.G.

Property Services

- Paving • Groundworks • Decorating
- Pressure Washing • Garden Maintenance
- General Repairs & Improvements  

0737 607 3816
01748 884 321
Email: Ryang2190@gmail.com

REETH AND DISTRICT GAZETTE LTD

Leyburn Arts and Community Centre

Something different for July is our Summer Film Making Workshops, with award winning film maker Giovanni Maderna. These consist of a series of 10 sessions over 5 weeks, Wed & Saturdays, from 24th July to 21st August. These are open to anyone and will provide an introduction to the many aspects of film making: Writing, Directing, Production, Cinematography, Sound, Costume & the role of actors. Take an immersive journey into contemporary & classic cinema, fiction & documentary. Watch & discuss world cinema, Develop your own project. For anyone interested in films, as a possible career or just a hobby. Sessions are £4 or the full course £30. See our website for more information or to book a place, tel 01969 624510.

"Maybe Dick", our recent live theatre production was excellent, clever, funny, inventive and a very skilled performance from 'Ishmael' describing the fate of Moby Dick. The scene changes were impressive, and it was a really good night. Also recently enjoyed was 42nd Street - the last of Cinema Live's musical season. It was an uplifting and joyful evening's entertainment. Soon to come are more Exhibitions of Screen.

As part of the Wensleydale Community Arts Festival, Joan & Carl's Fun Dance Evening was a mixture of easy Sequence, Ballroom, Line dancing, Scottish & Ceilidh dances. Emphasis was on the Fun! Our two recent Plant Fayres were a huge success, with a 'best ever' display of plants, donated, grown from seed or propagated. Some plants are still available if you have

a space to fill.

Work begins soon on our new Accessible Toilets and as a consequence there will be limited parking and noise at some times. As part of the on-going fundraising, Raffle tickets are on sale for the Autumn Grand Draw!

Don't forget to sign up for our Community Shed newsletter or see previous ones on the website. Best wishes for a sunny July.

Jeannie Bishop



LEYBURN ARTS AND
COMMUNITY CENTRE

Music Tuition for all ages with
www.colinbaileymusic.co.uk
07711 211169

Drums & Percussion; Vocals;
Piano & Keyboards; Music Theory;
'Get Musical' Workshops.

two dales bakery
reeth

ARTISAN BAKERY & CAFÉ

Delicious breads and pastries
Food served all day including
vegetarian/vegan options
Well behaved dogs welcome
Visit us at the Reeth Dales Centre,
Silver Street, Reeth,
North Yorkshire, DL11 6SP
Please see our website
for current opening times
www.twodalesbakery.co.uk
01748 905001

McGarry & Co SOLICITORS



Local Knowledge & Practical Advice

Your Legal Companion

- PROBATE & ADMINISTRATION
- WILLS
- AGRICULTURAL MATTERS
- POWERS OF ATTORNEY
- NURSING & RESIDENTIAL HOMES
- LAND TRANSACTIONS

Offices At:

Barnard Castle

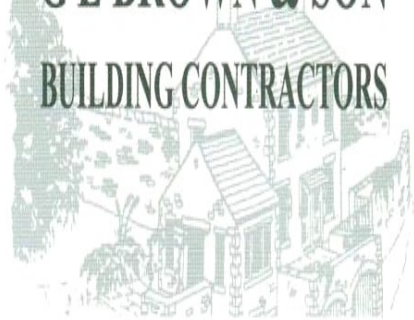
Hawes

mbmcgarry.co.uk
e.office@mbmcgarry.co.uk

t. 01833 600 160
DL12 8EQ

t. 01969 666 290
DL3 3QS

GE BROWN & SON BUILDING CONTRACTORS



All Building Work Carried Out
Damp Proof Course & Timber Treatment
Specialist Joinery Work
Work carried out by time-served qualified craftsmen

Email: gebrownson@f2s.com
Telephone: 01748 886356

CALVERT & JENKINSON LTD

— Building Contractor —

All Aspects of building work carried out from renovation to new builds, plastering to roofing.

www.cjbuildersltd.co.uk

cjbuildersltd@gmail.com

Andrew: 07837955869

Ryan: 07968463840

CURRENTLY HIRING!

Please get in touch for further details.

Upper Wensleydale Property Services Ltd

All aspects of domestic plumbing & heating work undertaken
Bathroom supply and fitting, wet room installation & tiling,
heating systems, oil boilers & tank installations

Please contact Malcolm Grant on 07855 191 466
email: mgwensleydale@gmail.com

Steps along the Way

An event to remember and celebrate:
the lives of loved ones now died
the occasion of our baptism
wedding days - our own and those of
friends and family

Keld Chapel Sunday July 7 at 2.00

Led by the Revd Peter Poulter

Please feel free to bring a photograph,
memento or toy to help focus on the special
people and occasions that we are celebrating



Yoga Classes



Tuesdays
9.30-10.30 Reeth Memorial Hall
Introductory price £5
(regular price £7).

For details, contact Debbie
yogadebbie@hotmail.com
or 07707 683317

R. & W. GIBSON & SON Ltd.

CERAMIC WALL
& FLOOR TILERS

SHOWROOM NOW OPEN

Monday - Friday: 9.00am - 4.30pm

Saturday: 10.00am - 1.00pm

(or by appointment)

At Borough Road,
Gallowfields Trading Estate
DL10 4SX

Tel. 01748 - 822682 (Home)

Tel. 01748 - 821909 (Showroom)

"We cover the Dales"

Hindsight

Accountants LLP

Tony Fava

- Bookkeeping, Payroll and VAT Returns
- Annual accounts and tax returns
- Company Formations

11 Finkle Street, Richmond, DL10 4QA

Tel: 01748 822049

Email: [info @hindsightaccountants.co.uk](mailto:info@hindsightaccountants.co.uk)

Orchard Caravan Park

Idyllic setting in the market town of Reeth, nestled next to the river Swale
in the heart of beautiful Swaledale.

Orchard Caravan and Camping Park is the ideal location for
a tranquil and relaxing break, or for those who seek an active
holiday to enjoy walking and biking.

Static Caravan Hire

Camping pod hire

Touring, motorhome & Camping welcome

Email: Office@Orchardcaravanpark.com

Facebook: [@Orchardcaravanparkreeth](https://www.facebook.com/Orchardcaravanparkreeth)



Farmers Arms Community Purchase Update—New Community Share Offer

On 10th June The Muker Community Benefit Society launched an additional community share offer to secure the purchase of the iconic Farmers Arms pub in Muker.

Professor Sir Mike Richards, the Society's chairman, explains. *"All the advice we've received says that we cannot rely on the Community Ownership Fund (COF) being available after the general election and that it will be many months before any alternative scheme becomes available. Given the level of support and enthusiasm for the project, instead of giving up, the Society feels the best approach is to raise the funds ourselves".*

Very kindly, a keen supporter of the community purchase has already stepped in to provide a loan that bridges over half the gap left by the withdrawal of COF, so rather than having to raise £250,000 the Society's minimum target is £80,000.

"Though the withdrawal of COF was an undoubted blow" says Ian Evans, the Society's treasurer, "raising the funds ourselves frees us from the obligations that come with a COF grant and if successful, will secure the funds much more quickly. Though we realise just how generous the Farmers Arms community has already been, we hope that just a little more generosity and one last push will see us over the line".

All this means that with a fair wind the Farmers Arms could be in community hands sooner rather than later, secured for the future, and back at the heart of Muker Parish to the benefit of both the

Parishioners and the many visitors to Upper Swaledale.

If you're interested in supporting the community purchase and would like to be able to say that you own a little part of the Farmers Arms, now is the time! Please contact mukercommunitypub@gmail.com or visit <https://mukercbs.org> to apply for shares.

R.Foster

Tree and garden maintenance

All aspects of tree work undertaken.

Hedges & shrubs maintained.

Garden tidying. Stump grinding.

Tree & shrub planting.

**Lawn care. Cutting, edging,
scarifying and aeration.**

Gutters cleaned.

Tel Robert on 07870 444360

S.J.R Plumbing Services

For all of your domestic
Plumbing requirements.

C & G/Advanced C & G Qualified
Reliable With Very Competitive Rates

Based in Reeth

01748-884036

Or 07977-297563



July Update

Wensleydale Community Arts Festival

A huge thanks to our amazing performers and artists, volunteers and audiences who have supported the festival. As always, it takes a huge team effort to make it all possible. We hope to build on our second year and the lessons learnt as we continue to grow and develop the festival offer. We are straight back into planning mode so please get in touch if you would like to be involved and/or take part next year.

Summer Activities

Let's Get Creative Competition - Closing Date 31st July

We are inviting individuals of any age or ability to share their artistic talents. Send us your most imaginative and creative entries for a chance to win exciting prizes! There are two themes to choose from: *'A view from the window'* or *'Rural Life in Wensleydale and Swaledale'*.

Submissions can be in various art forms, including but not limited to photographs, paintings, drawings, digital arts, sculpture, short films, music, poetry, and performance art. Each participant can submit up to three entries appropriate for all ages to view. You are also encouraged to include a brief caption explaining the context of each submission.

See website for full competition

details. Age Categories: 5-7 years old | 8-11 | 12-15| 16-19 | 20 and over. Entries must include your full name and contact details. Digital submissions should be sent via blueboxt.wetransfer.com with the subject line *'Let's Get Creative Competition'*. Entries can also be left at Office 15, First Floor, Thornborough Hall, Leyburn, North Yorkshire, DL8 5AB. Entry is FREE. Closing date: 31st July 2024.

Activity Afternoons

Join the BlueBoxt team for an afternoon of creative fun for ages from 4 to 14 years old. We'll be offering a selection of indoor and outdoor activities including Crafty Crafts, Scavenger Squad, Melody Makers, Team Players and Stage Stars. Our Culinary Cadets will be helping us to explore and create nutritious snacks too.

We are delighted to announce we are being supported by North Yorkshire Together to provide free places to attend as part of the FEAST programme. Vouchers are available from the school that your child attends and places need to be booked at www.holidayactivities.com. Full cost places are £24 per person, per session which can be booked at www.wensleydale.org. We are here to help - please contact us for support.

Fundraising

Strawberry Teas

Our next event is the popular Strawberry Teas on the lawns of Thornborough Hall which takes place on Sunday 4th August from 2pm. There will

REETH AND DISTRICT GAZETTE LTD

be live music from Leyburn Jazz Collective.

Grand Prize Draw

Our thanks to everyone who has donated prizes which include a colour TV and various vouchers including Sunday Lunch for two and clothing. Tickets are now on sale for £1 each (cash or card accepted). The draw takes place on Tuesday 29th October.

Running for Charity

Our events coordinator and volunteer Jennifer Sagers is putting on her running shoes to raise funds for BlueBoxt. She will be running the Yorkshire Ten Mile 2024 on Sunday 20th October in York. You can support Jennifer by contacting us 01969 745810 or following the link on blueboxt.org or social media posts.

Leyburn Jazz Festival - Young People's Workshop

Registration is now open. A fantastic opportunity for musicians and singers aged 11-19 to be creative and work with saxophonist Helena Summerfield (Parliamentary Jazz Educator of the Year 2022). Ideally, participants should be at around Grade 3 level or higher. There are three sessions at Leyburn Methodist Hall with a sharing performance presentation at St. Matthew's Church as part of the Jazz Festival. Booking is for all three sessions. Session one - Sunday 6th October, 2pm-5pm - playing by ear and developing improvisation skills. Session two - Sunday 13th October, 2pm-5pm - exploring composing and arranging skills. Session three - Saturday 19th October, 10.30am-12.30pm - rehearsal

and performance. Booking essential at leyburnjazz.org. Your booking is for all three sessions.

Leyburn Christmas Festival - performer callout

We are supporting Leyburn Town Council and the Business Network to organise the Christmas Lights Switch On which takes place on Saturday 30th November. We have opportunities for performers to be part of the celebrations and would like to hear from you.

You can call or text our box office and enquiry line on **01969 745810** or email info@blueboxt.org
www.wensleydale.org
www.leyburnjazz.org
www.blueboxt.org

Colin Bailey

BARTLETT & ELECTRICALS

| Domestic Appliance Servicing |
| Installation |
| Electrical Services |
| PAT Testing |
| Repairs |
| Sales |
| All makes and models |
| Based in Leyburn |

www.BartlettElectricals.co.uk

Tel : 07920 401042

Email: Ben@BartlettElectricals.co.uk

REETH AND DISTRICT GAZETTE LTD



Be a Volunteer trustee with SWAAG

Are you looking for a volunteering opportunity?

Do you enjoy working with others who have a passion for their local community and its archaeology, history, heritage, and natural environment of the Dales?

Then, please do join us.

We are a small team in need of accounting and administrative skills and are looking for a **treasurer** and **secretary** to join our management board as associate trustees.

We don't have premises, so all our activities are planned around kitchen tables or on zoom and by emails.

We can agree flexible roles with a time commitment of 4-6 hours a month.

Interested?

Contact rod@swaag.org and see www.swaag.org for what we do.

SWALE HAIR SPA



LOOK GOOD

FEEL GREAT

BE-WELL.

We are open **Tuesday- Friday**, plus every 5th **Saturday**.

Call us on: 01748 884627

Email us: info@swalehairspa.com

www.swalehairspa.com

A.J. CLACHER LTD

Established 1961

PLUMBING & HEATING ENGINEERS

- Oil, Gas, LPG and solid fuel central heating installations

- All aspects of plumbing and heating installations

- Specialists in boiler servicing and repair

- Oil tank installations

- Landlord Gas Safety Inspections

- Bathroom installations and Plumbing

- Air and Ground Source heat pumps

Tel 01325 468372 Email info@ajclacher.co.uk

www.ajclacher.co.uk

VIESSMANN



NIBE

Nu-Heat
Feel the difference





Friends of the Dales Summer Programme

Walk: Access the Dales by foot or Terrain Hopper!

Wednesday 31 July, 11:00 - 3:00pm

Friends of the Dales is hosting its first all-terrain wheelchair guided walk on 31 July in collaboration with the charity, Access the Dales and walking company Where2Walk. Early bookers can also secure the use of an all-terrain Trampler or Terrain Hopper wheelchair for this event. For full details and booking links for all these free events visit: <https://friendsofthedales.org.uk/events>

Event: Friends 4 Friends

Thursday 1 August, 5:30 - 8:30pm

A social event for non members! (Members are welcome too but they must bring a 'non member' friend along with them). As we look to the future it is vital we recruit more members and so what better way to do this than encourage interested supporters and like-minded friends to join us for a sociable evening in Gargrave of welcome refreshments and snacks, fun quiz and a leisurely three mile circular walk. NB. no obligation for non-members to join - this is just a chance to get to know more about us.

Why not sign up for Friends of the Dales free e news on its homepage to receive news and events information direct to your inbox!

Victoria Benn



Owners Julie and Liz have their hearts in the Dales

“Absolutely gorgeous cottage in a quintessentially Yorkshire village”
- 2023 Guest -

One bedroom self-catering cottage
Langthwaite, Arkengarthdale

Contact us for more details:
Email: ivycottageyorkshiredales@gmail.com
www.ivycottageyorkshiredales.uk



Grinton Books

Open Daily
10-4pm
(next to the pub car park)

All proceeds towards the upkeep of the building

REETH AND DISTRICT GAZETTE LTD

Wensleydale Concert Series - July 2024

St Andrew's Church, Aysgarth, will ring to the sound of two fantastic, and very different, concerts in July.

The first concert on 6th July is a four-hand piano recital by two truly brilliant musicians: Benjamin Frith and Heidi Rolfe (below). The first half of the concert is a varied mix of music by the



Irish composer John Field (famed throughout Europe and admired by Chopin and Liszt), quirky French composer Erik Satie, a Rondo by Franz Schubert and one of Brahms's ever-popular Hungarian Dances. The second half is devoted to one work, Nicolai Rimsky-Korsakov's spectacular and entertaining "Scheherazade". This is an ideal summer concert for all music lovers and a great introduction to anyone new to classical concerts, it will be a spectacular evening!

The second concert on 27th July features the Herschel Trio - three musicians playing baroque instruments:



flute, recorders, viol and harpsichord (left). Their programme is a survey of early music from the British Isles and includes sets of 'airs' from Wales and Ireland, as well as music from England by

Purcell and Handel and less well known, but nonetheless brilliant, baroque composers. The concert features works by: James Oswald from Scotland, Moravian composer Godfrey Finger who worked in the court of James II of England, English Composer Thomas Arne (probably most famous for "Rule! Britannia!") and London Based violinist and composer, Nicola Matteis. This will be a real treat from three amazing musicians, another ideal concert for a summer evening.

Tickets and full details can be found at our website

www.wensleydaleconcertseries.co.uk

or you can order tickets by phone on 0333 666 3366 (quote date, name of artists and Wensleydale Concert Series). Tickets are £18 when bought in advance (or £20 at the door) and £1 for anyone under 18 or in full time education. When bought in advance you can also order a printed programme (we don't print large numbers for sale at the door any more). Parking is at the Falls carpark (next to the church) at the special concert rate of £1.50.

Any non-ticket related questions please call Carol or Liz on 01969 663026.

REETH AND DISTRICT GAZETTE LTD

THE OLD TEMPERANCE BOOKSHOP

Reeth, Richmond, DL11 6TE

Tel. 01748 884185

Christian books & cards, Fairtrade
crafts and food



Beside the village
green in Reeth, we are
50 yards up from Reeth
Evangelical
Congregational Church

Opening times:

1.30pm - 4.00pm Thurs, Sat

10.30am - 4.00pm Fri

On Mondays 1 & 15 July,
open only from 3pm-4.30.

CLOSED Sat. 20 July

OPEN ALL YEAR ROUND, EVERYDAY

SWALEDALE WOOLLENS

MUKER-IN-SWALEDALE, RICHMOND
NORTH YORKSHIRE



Celebrating 40 Years

The Quality is Legendary...
...The Choice is Endless.

TAKE HOME A PIECE OF THE DALES

Call into our shop in
Muker Upper
Swaledale and see
what unique garments
we have on display
from hand knit
cardigans, sweaters,
hats, scarves & gloves
to machine knit
sweaters & cardigans
for both ladies &
gents. We also stock
sheepskin rugs,
slippers & gloves.
**WE ARE OPEN
EVERYDAY**
Tel. 01748 886251

Email: mail@swaledalewoollens.co.uk
or visit our website where you can order online:
www.swaledalewoollens.co.uk



ANDY MALTON LTD – DALES GENERAL BUILDING CONTRACTOR



Dry lining/ plastering/ ceiling work
Roofing/ pointing/ guttering work
Most building repair work carried out

Free estimates - No job too small

07837645104

andymalton56@gmail.com



Swaledale Footcare

Meg Squires MCFHP MAFHP

Clinic Visits at Thornborough Hall Leyburn or
Home Visits Including:

Toenail Cutting

Corn Treatment

Removal of Hard Skin and Calluses

Treatment of Thickened and Fungal Nails

Phone : 01748 884795 or Mobile: 07929065602

Email meg.e.squires@gmail.com

Member of the British Association of Foot Health Professionals



REETH AND DISTRICT GAZETTE LTD

St Andrew's, Grinton

Heritage Day, Saturday 6th July from 10am to 3pm. There will be a textile/wool crafts stall, and the opportunity to try knitting and/or crochet and pick up the basics.

Tours up the Bell Tower will also be taking place, with visiting bellringers playing between 10-11am.

Refreshments and cake will of course be available.

Donations welcome but to note that the event is free to attend and dogs are very welcome.

Pimms and Hymns, Sunday 4th August at 4pm. This service is to be held in the churchyard with an assembled band of musicians. Please volunteer if you would like to take part in the scratch 'band' and please do come and help us enjoy this 'out in the open air' service. We will move inside if weather is poor.

Conservation Group meetings at St Andrew's will take place on **Saturdays 20th July and 17th August.** All are welcome so please come and support our conservation efforts in the churchyard [or cleaning efforts indoors] by joining us for coffee and scones and a bit of 'outdoor gym' activities from 10am - 12 noon.

Bat counts are at dusk on: **Wed 3rd July at 22.08pm and Wed 7th August at 21.19pm** Meet on the church path.

ADVANCE NOTICES:

On **Friday 23 August**, there will be a bric a brac stall on Reeth green alongside the Market. On **Saturday 14th September 7.30pm** St Andrew's

is hosting a folk concert and another concert on **Friday 11th October 7.30pm.** Both of these are for **Pinktober** fundraising. Further details will be in future gazette editions. Please consider putting these dates in your diary.

We look forward to your support at these events.

Please see the parish website or church noticeboards for further details of any of these events.

www.swaledalearkengarthdaleparish.org.uk



ALL OCCASIONS CATERED FOR

HOT & COLD FOOD OPTIONS
CAKES & TRAYBAKES

Contact Anne & Claire:
07837 805413
clairewilliams10@hotmail.com

Find us on Facebook & Instagram
@EASunterCatering

Wensleydale Tree & Horticulture Services (Est. 1995)



David Allen (HND Arboriculture)
Fully Insured (£5 million)
Professional tree work: felling, crownthinning etc. to BS3998

Tel 01969 667364 Mobile: 07811 576108
E-Mail: treesinhawes@gmail.com
www.treesinwensleydale.com



LIBERTY FABRIC

Quality fabrics for quilting, dressmaking, etc., sewing accessories, a little wool/yarn .

Abbotstone House Collection, Now at Unit 5 Raynes Ct, Hawes, DL8 3UW

☎ 07921 058803



WE ARE MORE THAN
ACCOUNTANTS

- Family firm
- Established reputation for saving you tax
- Helping you grow your business
- Friendly service tailored to you



clarksonsassaccountants.co.uk



01969 624999



info@clarksonsassaccountants.co.uk



SWALEVIEW
PARK

Invest in your wellbeing this year with a lodge or holiday home in Swaledale!

Swaleview Park is a non-residential holiday park, open all year.

Located in the beautiful Yorkshire Dales, 3 1/2 miles from the market town of Richmond, overlooking woodlands & the River Swale.

Visit our website, Facebook & Instagram for sales & offers.

info@swaleviewpark.co.uk
www.swaleviewpark.co.uk
01748 823106 | 07736 820283

Lady Interior Decorator

Painting & Decorating, Competitive rates
Established 30 Years: Based in Richmond
Free estimates, Friendly advice, Est 29 years

Call Yvonne on: 07838378836

Email: yvonesdecor@hotmail.co.uk

Dales Reyno-Vations



General Building & Maintenance

Property renovations / Roofing

Kitchen fitting / Joinery

Bathroom suites / Tiling

Painting & Decorating

Patios / Landscaping / Ground maintenance

Free estimates / Insurance quotes

No Job too small

D Reynoldson

11, Place Hill, Reeth, Richmond

North Yorkshire, DL11 6SD

01748884309 / 07792458801

PROPERTY MAINTENANCE

General Building Work, Dry Lining,
Decorating, Electrical Work, Kitchen
Fitting, Joinery, Paving, Garden
Maintenance, Roofing, pointing &
guttering work. Small jobs welcome.
Free estimates.

Contact Martin or Django

Tel 01748 886 465 Mob: 07813 715 120

Email: martinkiss1960@gmail.com

NORTHERN WALLS

DRYSTONE WALLING & LANDSCAPING

Former National Trust
gardener with 20 years
experience

City and Guild Certificate in
Horticulture

www.northernwalls.com

Tel 0795 148 1239

THE HEALING COLLECTIVE

Encouraging health and well being
with a range of therapies including

* Reiki * Counselling * Bach Remedies *

* EFT (tapping) * Indian Head Massage *

Treatments for animals also available.

Coach House, Berry's Farm Shop & Café,
Swinthwaite, DL8 4UH. t.0845 474 2383

info@healingcollective.co.uk
www.healingcollective.co.uk



REETH AND DISTRICT GAZETTE LTD



THE WENSLEYDALE SCHOOL
& SIXTH FORM
LEYBURN

Every now and again the Government talks about how schools should take a firm line with mobile phones, encouraging tough policies to ensure that phones are not a distraction to learning and are not used negatively during social times.

Whilst part of me wishes the Government would issue a blanket nation-wide ban on student use of phones in school (as is the case in some countries), I do 100% agree that schools need to be firm on this issue and allow no grey areas.

I've visited many other secondary schools and every time I go out, I am even more convinced that our mobile phone rules at Wensleydale are absolutely right. Students are welcome to have mobile phones in their possession at our school, and we don't ask them to be locked away in special lockers each morning like some schools, but they must not be seen or heard at all when a student is inside our school gates. If a phone is seen or heard then it is confiscated, a policy enforced by every member of staff.

It's a very simple rule and an effective one, and one that I know has had an impact on learning, behaviour, student wellbeing and in a reduction of online bullying. I am aware that the policy can be annoying to some parents and carers at times, but I stand by it as being one of the most transformative things we have done in the 10 ish years I have

been Headteacher. I will always remain very grateful for the support of families with this policy, as together it is making a difference.



However, no matter what safeguards we put in place at school or at home, we as adults need to be mindful that the camera-phone can be a danger to the teenager who uses it. The BBC reported recently that the authorities had taken the unusual step of asking schools to warn students about the dangers of voluntarily sharing explicit images of themselves: <https://www.bbc.co.uk/news/uk-68918550>

It is a timely reminder that we need to keep impressing on young people that they should never share such images of themselves online. Once the images are out there, they can never be deleted. So often young people believe in or trust the person that they are sending pictures to, only to have that trust broken with serious consequences. More and more, criminals are now deliberately targeting teenagers and young adults in the hopes of exploiting their shame and embarrassment for money. For that reason, we as a school will carry on making our students aware of the dangers of voluntarily sharing images online, and I'm sure that parents and carers will do the same.

Julia Polley

Ard Rock Bike Festival Returns to Swaledale!

participate in the Hope Academy coaching sessions or try out the test tracks. It's a fantastic opportunity for families to experience mountain biking.



The 2023 event was a success and raised over £15,000 for charities such as the Yorkshire Air Ambulance and Swaledale Mountain Rescue. Additionally, the event made contributions to local services, including the Reeth Doctors Surgery and Reeth Primary School, as a way of thanking the local community for their support.

From the 26th to the 28th of July, the Ard Rock Bike Festival will once again bring excitement to the beautiful Dale, drawing riders and their families from across the UK and abroad. The event will be next to the Dales Bike Centre and in the fields below Reeth, featuring a variety of activities that promise fun for all ages.



Riders will test their off-road skills out in the hills, and in the start fields there will be activities, including bike demos, kids' coaching, test tracks, and live music.

Ard Rock is not just an internationally renowned mountain bike event; it also brings a significant boost to the local area. We are incredibly proud to call Swaledale home and to showcase the area to visitors from near and far.



While the festival will bring more people to the area over the weekend, we hope you will join in welcoming them warmly. Your support and cooperation are greatly appreciated.

Accessing the event is free for local residents, encouraging you to spectate and enjoy the atmosphere. Children can

We look forward to seeing you at the Ard Rock Bike Festival and thank you in advance for your cooperation and support.

Joe Rafferty

REETH AND DISTRICT GAZETTE LTD



Yorkshire Dales Accountancy
Chartered Accountants

taxation & business advisors

Providing a broad range of accountancy and taxation services across a variety of sectors, including:

- Accounts • Business Tax • Personal Tax • VAT • Payroll
- Construction Industry Scheme • Capital Gains Tax
- Inheritance Tax • Making Tax Digital



Hawes - Leyburn
2 Chapel Street, Hawes
North Yorkshire, DL8 3QG
E: info@yorkshiredalesaccountancy.co.uk
T: 01969 678128
www.yorkshiredalesaccountancy.co.uk

YDA_Advert-24.10.22_v4.indd 1

28/10/2022 14:17

SWALEWOODS LTD.

FORESTRY & ARBORICULTURE
AGENTS, CONSULTANTS & CONTRACTORS



Whether you have a fruit tree in need of pruning, a large commercial timber plantation to manage, a hedge to cut, or ancient woodland to restore, we offer a competitive service to help you get the most out of your trees!

Contact Chris Curry at Swalewoods for all tree surgery and forestry services:

M: 07528 684617

E: chris.curry@swalewoods.co.uk

W: www.swalewoods.co.uk

O: West View, Healaugh, Richmond, North Yorkshire. DL11 6UD



| Forestry Management | Stewardship Schemes | Woodland Establishment | Tree Inspection | Tree Surgery |



REETH AND DISTRICT GAZETTE LTD

Church Opening Times and Services in July

7th July	9.15 am	St. Mary's Muker	<i>Eucharist</i>
	10.30 am	St Joseph & Francis Xavier Richmond	<i>Mass</i>
	10.30 am	Low Row URC	
	11.00 am	Holy Trinity Low Row	<i>Eucharist</i>
	11.00 am	St. Edmund's, Marske	<i>Holy Communion</i>
	11.00 am	Reeth Evangelical Congregational	
	6.30 pm	Gunnorside Methodist	<i>Mid-Summer Service</i>
	4.00 pm	Reeth Evangelical Congregational	<i>Refreshments from 3.45 pm</i>
14th July	9.30 am	St. Andrew's Grinton	<i>Eucharist</i>
	9.30 am	St Michael's Downholme	<i>Morning Prayer</i>
	10.30 am	St Joseph & Francis Xavier Richmond	<i>Mass</i>
	10.30 am	Low Row URC	
	11.00 am	Reeth Evangelical Congregational	
	11.00 am	St. Edmund's, Marske	<i>Morning Prayer</i>
	11.15 am	St. Mary's Arkengarthdale	<i>Holy Communion BCP</i>
	4.00 pm	Reeth Evangelical Congregational	<i>Refreshments from 3.45 pm</i>

United Reformed Church

G Edward Brown 01748 886 181
edwardbrown@f2s.com
And Sue Alderson 01748 886292
Susana@swaledale.org

Methodist

Reverend Julie Reid
Minister for the Two Dales
01748 823 149
Rev.julia.reid@gmail.com

**Reeth Evangelical Congregational
Church**

The Revd David Levell
07582 575 815
www.reethecc.co.uk

Roman Catholic

Fr John Bane
01748 822 175
www.stjosephsfx.co.uk

REETH AND DISTRICT GAZETTE LTD

Church Opening Times and Services in July

21st July	9.15 am	St. Mary's Muker	<i>Holy Communion BCP</i>
	10.30 am	St Joseph & Francis Xavier Richmond	<i>Mass</i>
	10.30 am	Low Row URC	<i>Joint Pastorate ser- vice at D'ton</i>
	11.00 am	Reeth Evangelical Congregational	
	11.00 am	Holy Trinity Low Row	<i>Eucharist</i>
	11.00 am	St. Edmund's, Marske	<i>Holy Communion</i>
	4.00 pm	Reeth Evangelical Congregational	<i>Refreshments from 3.45 pm</i>
	6.30 pm	Gunnarside Methodist	<i>Holy Communion</i>
28th July	9.30 pm	St Michael's Downholme	<i>Holy Communion</i>
	9.30 am	St. Andrew's Grinton	<i>Eucharist</i>
	10.30 am	St Joseph & Francis Xavier Richmond	<i>Mass</i>
	10.30 am	Low Row URC	
	11.00 am	Reeth Evangelical Congregational	
	11.00 am	St. Edmund's, Marske	<i>Holy Communion</i>
	11.15 am	St. Mary's Arkengarthdale	<i>Holy Communion BCP</i>
	4.00 pm	Reeth Evangelical Congregational	<i>Refreshments from 3.45 pm</i>

Church of England

Reverend Canon Caroline Hewlett

Vicar of the Parish of Swaledale with Arkengarthdale

01748 884 706 carolinejhewlett19@gmail.com

Religious Society of Friends (Quakers)

Quaker House, 7 Grove Square, Leyburn every Sunday at 10.30 am
The Scout Hut, Quakers Lane, Richmond 2nd and 4th Sundays at 10.30am
www.dalesquakers.org.uk

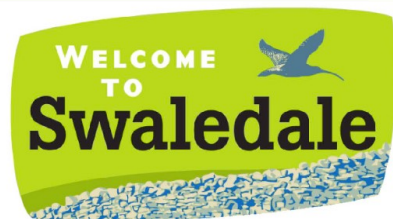
Keld Resource Centre

STUDY DAYS

Our Keld study days provide an opportunity for the exploration of faith and spirituality. They offer the chance for learning, reflection and sharing in the "thin place" that is Keld.

Our next study day will be on Thursday July 4th, 10.30-3pm. It will be led by Revd. Michael Pearson who will be acting as Minister in Residence at Keld from Sunday June 29th. His theme is "Five Impossible Things to Believe before Christmas!". Sounds intriguing. We provide the drinks but ask you to bring your own packed lunch. The cost for the day is £10.

If you would like to attend, please email Revd. David Wood at : david.wood4@btinternet.com



S A B F

Swaledale & Arkengarthdale Business Forum

**Members, get assistance to
enhance or update your entry**

**Non-Members, send your
details for a basic entry**

**visit our website
www.swaledale.net**

Packed with useful information for
visitors and locals alike, including
a comprehensive services directory



Hudson House Centre Reeth

**Owned by the Community of
the Two Dales**

Community

- Gallery
- Learning
- Library
- Orchard
- Transport

National Park Centre
North Yorkshire CC
Police
Richmondshire DC
Swaledale Festival

Business Forum
Hot drinks vending machine
Internet & WiFi
Local notices & information
Meeting Rooms
Tourist Information & Shop

Open all year

7 days a week

See website for times

Silver Street Craft Unit's
managed by Hudson House.
For all enquiries contact
Jill May.

01748 884485

www.hudsonhouse.info

Reeth Memorial Hall

Fancy doing something a little bit different on election day?

Thursday 04th July - *Over The Moon*
Canadian roots/swing duo *Over The Moon's* Suzanne Levesque and Craig Bignell are award winning multi-instrumentalists and vocalists. A wild ride from 40's sounding western swing and Appalachian old-time, to cowboy blues. Simple and sweet, all their material has a common thread that speaks of the Canadian west.

Friday 26th July - *The Everly Brothers & Buddy Holly Tribute Show*
A spectacular two-hour show featuring the UK's Number One tribute to The Everly Brothers along with Buddy Walker with his tribute to Buddy Holly, performed worldwide for more than thirty years. Tickets £16 (£18 door). Please see website for further details of all concerts booked. There are some links to videos by some of the performers on there.

Tickets for concerts are available from Reeth PO or phone Glen Steward (01748 884989) or visit www.reethmemorialhall.co.uk - tickets ½ price u16s. All concerts 8pm unless otherwise stated.

A. HOWARD JOINERY

no job too small
01748 884045

andrewhowardjoinery@gmail.com

James Peacock



Solid Fuel Merchant Bainbridge

Good quality fuels at competitive prices.
Deliveries to Wensleydale, Swaledale and Coverdale.
No delivery too small.

Tel. 01969 650212/650465

Email:

jamespeacock@btconnect.com
www.james-peacock.co.uk

The Everly Brothers & Buddy Holly Tribute Show



featuring The Temple Brothers
with Buddy Walker

Entertainment
Agents
Association Ltd

OFFICIAL UK NO. 1 WINNER
THE NATIONAL TRIBUTE MUSIC AWARDS 2017

8pm Friday 26th July
in Reeth Memorial Hall

Tickets £16 in advance; £18 on the door
(u 16s half price)

on sale at Reeth Post Office

or contact 01748-884989;

email: memorialhall@swaledale.org

SWALEDALE FARMING FILM & PHOTOGRAPHY FESTIVAL

FILM SCREENINGS

@7pm

Weds 19 June
Reeth Memorial Hall

Weds 26 June
Muker Public Hall

Weds 10 July
The Station Cinema,
Richmond

PHOTOGRAPHY EXHIBITION

Sat 23 May to Sat 8 June
Keld Resource Centre

Sat 15 to Sat 29 June
Orchard Gallery, Hudson House, Reeth

Thurs 4 to Weds 17 July
Mezzanine Gallery, The Station, Richmond

To book:

www.ticketsource.co.uk/TeesSwale

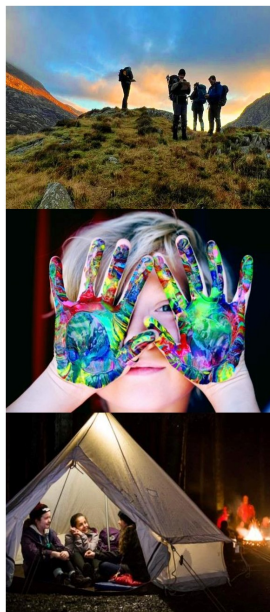


We still need 2 Leaders to help the Group grow back to strength again and to work with our young people in the Beavers, Cubs and Scouts Sections.

In addition we also need volunteer helpers to assist the Leaders at meetings.

For further information on the role of Scout, Cubs and Beavers Leaders please visit our website or contact me:
<https://www.swaledalescouts.com/>

Nick Caldwell, Group Scout Leader on 01748 884340



Library matters

Thanks to **Anne Barden** for the following review:

Less: stop buying so much rubbish by Patrick Grant

A manifesto to save the planet and humans....this book is a bit preachy but Patrick makes some very important and thought-provoking points. As a result, I've deleted that famous Chinese cheap shopping app from my phone! Think quality not quantity. Think, do I need it or can I repair what I've got or get it secondhand? I shop vintage and chazza shops but I do like a bit of fast fashion. However, the numbers that Patrick quotes about the amount of waste clothing due to our obsession with online cheap clothing are mind boggling. And we export it to places where they don't want it, to become a mountain of plastic waste in places least able to deal with it. Well, I say Patrick for PM!! He also bangs the drum for funding for libraries! An enlightening listen on Audible.

Elizabeth Sykes recommends the novels of Kirstin Hannah. These bestsellers get very positive reviews and are popular with book groups who have enjoyed the gripping tales of survival set in very different times and places. Hannah excels at giving insightful analysis and development of relationships. Try "The Women" for a tale of the chaos and destruction of war in Vietnam; "The Four Winds" about the 1934 drought on the Great Plains of America, or "The Nightingale", where two sisters struggle for survival in war-torn occupied France.

elizabeth@bedfords.me.uk

Notice

THE CHARLES ALDERSON TRUST

The above Trust was established, in memory of Charles Alderson, for the purpose of relieving, in cases of need, persons resident in the former Rural District Of Reeth (the parishes of Arkengarthdale, Ellerton Abbey, Fremington, Grinton, Marrick, Melbecks, Muker and Reeth) who are sick, convalescent, disabled, handicapped or infirm, by providing or paying for items, services or facilities which are calculated to alleviate the suffering or assist recovery of such persons, in such cases where help is not readily available to them from other sources.

Applications for assistance should be made in writing to
The Clerk to the Trust,
Mrs C Steward,
2 Hillary Terrace, Reeth, Richmond,
North Yorks, DL11 6TG

Property Maintenance & General Building

Building work & property maintenance undertaken

Plumbing, tiling, plastering

Kitchen & bathroom fitting

Joinery works

Small jobs welcome

Free No Obligation estimates

Also detail plans prepared for planning applications

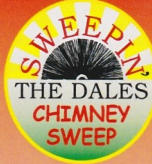
Contact Gary

Tel. 01748 886691 / Mob. 07896

147207

E-mail Swaddyman@gmail.com

Cover photo, Ramps Holme Bridge near Muker by Mike Joiner



YOUR LOCAL TRADITIONAL CHIMNEY SWEEP

NACS & HETAS qualified & registered

**We set ourselves very high standards
and take every care in your home**

We offer a comprehensive service

- All types of chimneys swept to relevant BS Std.
- Bird guards & cowl, etc. supplied & fitted
- Advice freely given, problems solved
- Carbon monoxide detectors
- Chimney pots replaced

01765 688078

www.sweepinthedales.co.uk

- Stove Refurbishment
- Stove servicing and repair
- Solid fuel stove installations
- Stainless steel flexible linings
- Stainless steel rigid flue systems
- Only high quality components are used

HETAS qualified & registered installer

STOVE INSTALLATION



TLC@Gunnerside talk

What did we do before plastic?

Talk by Wendy Knight, 7.30
Thursday 25 July, Gunnerside Village Hall

Do you remember wrapping your sarnies in greaseproof paper? And rinsing out your milk bottles before popping them on the doorstep for the milkman to collect?

I'm sure Wendy Knight's talk will give us all some memory joggers, as well as suggesting present day alternatives for storage without using cling film. She'll also show us how to make beeswax wraps for jars and give us kits to take home and try.

Guests are very welcome for just £2, which includes tasty home bakes and drinks, and a bit of a chat.

Sue Barron 884937

STURDY TRAVEL

INDEPENDENT TRAVEL SPECIALISTS

Now at 1 Golden Lion Yard
Market Place, Leyburn DL8 5AS

For all your travel needs, home and abroad

Call: 01677 422826

Email: robert@bakewelltravel.co.uk



Part of Bakewell Travel



REETH POST OFFICE

**More than just a Post Office
Its a 25+ miles round trip to
the big shops.**



SERVING OUR COMMUNITY

www.reethpostoffice.co.uk

ELLIS CLIMATE CONTROL

AIR SOURCE HEAT PUMPS

It's time to say goodbye to expensive energy bills with a **TOSHIBA** Air Source Heat Pump from the team at Ellis Climate Control.

Unbeaten 10-year Warranty Available



A+++
Heating & Cooling



TOSHIBA
Leading Innovation >>>



Contact us today for a free no obligation survey & quotation on:

M: 07837 890970 **E:** info@ellisclimatecontrol.co.uk **W:** www.ellisclimatecontrol.co.uk

Fremington
dalesbikecentre.co.uk
tel:01748 884908

Cafe & Cakery

SOUPER TUESDAYS
Homemade soup, bread roll,
slice of cake & hot drink
Only: £7 every Tuesday

**SHOW STOPPER
FRIDAYS**

Every week a 'Showsstopper' of a cake!

Dales

Bike Centre

OPEN EVERYDAY!

Book a Stay
14 beds Bunk & Breakfast

New & Ex Hire Bike Sales
Mountain/Road Bike Hire
E-Bike Hire & Sales
Bike Servicing



FROG
bikes

Orange
MOUNTAIN BIKES

Hazel Brow Farm - Open Farm Sunday

Hazel Brow Farm in Low Row, Swaledale hosted an 'Open Farm Sunday' event on 9th June.

Open Farm Sunday is a National Free Event organised by LEAF (Linking Environment And Farming) where farmers open their doors and give visitors the opportunity to learn more about farming and the countryside. It is an opportunity for everyone, young and old, to discover at first-hand what it means to be a farmer and the work they do producing food, enhancing the countryside as well as appreciating all the goods and services farmers provide.

Over 150 visitors, adults, children, parents and grandparents attended the event from all four corners of Yorkshire and County Durham.

The visitors had the chance to experience a wide range of activities during the day. There was an opportunity to 'meet and feed' the alpacas, geese and goats led by

Catherine Calvert, and a full farm tour to see the cattle and sheep hosted by Raymond Calvert, who talked about the day to day operation of the farm and his life as a Dales farmer.



Emily, the travelling shepherdess, gave a demonstration of sheep clipping and then entertained everyone with her sheepdog Nap working a group of sheep in the pasture.

The event was also supported by Pepperfield Farm Hedgehog Rescue and members of the Tees-Swale Naturally Connected Project who supported with the tours, set up information boards and craft tables for the children and led 'Bumblebee' walks through the pastures.

Catherine Calvert commented "It was a really successful day and we were so lucky with the weather. Families were able to enjoy their picnics on the grass and wander round our nature trail across the meadow. Many of the visitors have



REETH AND DISTRICT GAZETTE LTD

already commented on how much they've enjoyed their visit and how much they've learnt about the animals and farming."

Open Farm Sunday is a National Initiative organised by LEAF which is a national charity that helps farmers improve the way they farm by encouraging them to take up Integrated Farming. LEAF also helps to create a better public understanding of farming through a national network of Innovation Centres, LEAF Education work and obviously initiatives like LEAF Open Farm Sunday, which brings farmers and con-sumers together to raise awareness of how farmers are working in harmony with nature to produce good food with environmental care, sustainably.



"People have a healthy appetite to learn more about what farmers do in terms of land management, nature protection, environmental stewardship and food production. The most powerful voices to share their knowledge and experiences are those of farmers themselves and this year's OFS activities have proved just that." said Annabel Shackleton, OFS Manager.

Cath Calvert



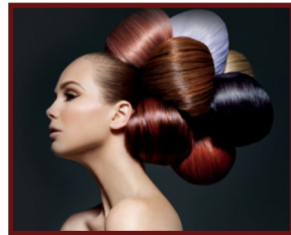
We're Recruiting!

- Site Engineer (Ripon & Hawes)
- Production Operatives (Ripon and Hawes)
- Production Supervisors (Ripon)
- Health & Safety Support (Hawes and Ripon)
- Management Accountant (Hawes)

Visitor Centre Vacancies

- Permanent & Seasonal Summer vacancies at our Visitor Centre in Hawes
- Permanent Kitchen Assistant

Excellent rates of pay and staff benefits
wensleydale.co.uk/work-with-us



Sarah Louise Olney

- Mobile Hairdressing
- Facials
- Massage
- Reflexology
- Indian Head Massage
- Cruelty free products
- Cruelty free hair colour

Reeth 07875 926946

Melbecks Parish Council May 2024

Election of Chair and Vice-Chair

Cllr Alderson was nominated as Chair by Cllr Bowe and seconded by Councillor Silver. There were no other nominations, and this was unanimously agreed. Cllr Silver was proposed by Cllr Calvert and seconded by Cllr Bowe. There were no other nominations, and this was unanimously agreed

Dog waste bin, Low Row

A site meeting has taken place with the Dog Warden from North Yorkshire Council to look at possible sites for the dog waste bin. Another site meeting will be requested to ensure the most appropriate site is chosen.

Annual Audit

The council unanimously approved the Annual Internal Audit Report. The council unanimously approved the Annual Governance Statement, Accounting Statements and Certificate of Exemption, which were all signed by the Chair and the Responsible Financial Officer. The financial risk assessment was reviewed and unanimously adopted by the Parish Council. The council reviewed and approved the Financial Statement 2023-24.

Payments

Orders to pay and cheques were signed for £60 for Gunnerside Village Hall and £60 for Low Row Institute

Highways

Carriageway repairs at Brocca Bank are scheduled to take place from 10th June 2024 for a period of three weeks. There will be a road closure between the hours of 08:00 - 15:30 Monday to Friday. The clerk was also asked to notify Highways that the gutter at

Peat Gate needs clearing and to report a pothole above Hill Top Farm, Kearnton
Dales Police Reports

These were provided for March, April and up to May 7th 2024 and PCSO Don Watson provided the council with a further update about crime in the local area

Next meeting will be on Thursday 18th July 2024 at 7.30pm at Low Row Institute.

Fremington Village Hall

Redecorated and now with its own piano, the Village Hall (known locally as the Sunday School) is available to hire for all kinds of events, from regular classes, talks and community activities, to one-off functions like children's parties, lunches and dinners and special occasions such as wedding receptions and anniversary parties. The Hall has a small kitchen with electric cooker and microwave; toilet facilities including disabled toilet; and a small rear garden.

The Hall is a registered charity run by a small and dedicated volunteer committee. You can book the Hall by phoning or texting the bookings secretary **Alison Tupman** on **07967 839494** or by email at **fremingtonvillagehall@outlook.com**

Martyn Leaver

Dry Stone Waller

- Farm or domestic work
- Drystone or facemalling
- Fence repairs and paving
- Misc jobs etc

Thwaite 01748 886025
Mob: 07971 456 043



Visitor Centre Open Daily

Delicious Summer Menus!
Calvert's Restaurant & our
1897 Coffee Shop

Light bites, mains, monthly specials, coffee & cake. Dog friendly garden with views over the stunning Yorkshire Dales countryside.

Cheese Experience & Pairing Room

Book online for daily demos & guided pairings and take a peek inside the Creamery too

Kids go Free at weekends & school holidays

Take our FREE Cheese Trail Quiz and see if you can find the Wensleydale Bears!

Cheese & Gift Shop

New ranges and complimentary sampling
wensleydale.co.uk

NYCC HOME LIBRARY DELIVERY SERVICE

We deliver books,
audiobooks, DVDs and
information to the homes of
people who find it difficult to
get to their local library.

If you are interested in
receiving monthly deliveries
please contact

North Yorkshire Libraries
Headquarters on
01609 533800

Or Catterick Garrison Library
on 01609 534595

The Charles Bathurst Inn ARKENGARHTDALE

Outstanding fresh food served in
a warm & friendly atmosphere.

19 en-suite bedrooms with amazing views.
Available for dinners, weddings & meetings.



- Open Lunchtime 12 – 2.30pm Tuesday – Sunday
(Closed Monday lunch*)
- Evening Meals every night 6 – 8.30pm
- *Open Bank Holiday Mondays

FOR FURTHER DETAILS OR TO RESERVE A TABLE

Telephone: 0333 700 0779 Website: www.cbinn.co.uk

The Punch Bowl Inn

Outstanding fresh food served in a warm & friendly
atmosphere with stunning views of Swaledale.



- Open Lunchtime Tuesday – Sunday
(Closed Monday lunch*)
- Evening Meals Mon – Sat 5.30 – 8.30pm, Sun 5.30 – 8pm
- *Open Bank Holiday Mondays

FOR FURTHER DETAILS OR TO RESERVE A TABLE

Telephone: 0333 700 0779 Website: www.pbinn.co.uk



'Reaching the top' - by John Hunter

Having recently enjoyed an engrossing talk by our friend and Reeth resident Wilf Bishop about his expedition to the Everest base camp, I felt inspired to have a brief look at 'climbing inspired' movies. (Incidentally, Wilf and I also share a passion for the De Havilland Mosquito - so I feel some aviation-themed films 'coming soon' to a page near you!)

There are a whole host of films accurately depicting various real climbs, or dramatically using *real* ascents as starting points for their stories, but this time around we'll concentrate purely on 'popcorn' movies which use climbing as their dramatic focus such as **'The Glass Mountain'** (1949), a Michael Denison and Dulcie Grey feature largely remembered today for Nino Rota's stirring piano concerto theme. As with many films of this vintage, obvious studio sets and 'stock' footage dents the drama throughout. A decade later, Disney's **'Third Man on the Mountain'** (1959) - also based on a novel - fared much better with real location footage (the Zermatt) and climbing training for the actors (several of whom were injured). American James MacArthur (later 'Danno' in Hawaii 5-0) headed a largely British cast including Michael Rennie.

Yet another novel (by Trevanian), **'The Eiger Sanction'** (1975) sees Clint Eastwood playing an Art Professor mountaineer called Jonathon Hemlock! -



To be fair, most of the climbing scenes were filmed in Grindelwald, and as usual, Eastwood insisted on doing his own climbing and stunts, including a climactic rope 'dangle' 4,000 feet above a gorge. Acting and plot were criticised at the time, but the location footage is still stunning, and it even has a nice jazzy John Williams score.

By 1993 special effects had improved so much that **'Cliffhanger'** (1993) starring Sylvester Stallone included some extremely vertiginous scenes and added an action packed plot involving suitcases of cash being sought in the Rockies by both the good *and* bad guys after a botched mid-air heist. Top director Renny Harlin kept pulses racing throughout.

Bond director Martin Campbell was at the helm for **'Vertical limit'** (2000) in which young Chris O'Donnell finds himself near K2 (the movie was filmed at the actual locations in Pakistan) in a rollercoaster ride involving his Father's death and the 'rescue' of his younger sister. Throw in some unstable dynamite, leaps across chasms in the ice and a particularly stunning scene involving jumping from a helicopter onto a mountain ledge in a blizzard which stretches location footage, miniatures and digital mattes to their limit and shreds the nerves at the same time. 'Old timers' Scott Glenn and Bill Paxton augment the mostly younger cast.

Two movies set in the mountains but offering much more gritty fare are **'127 hours'** (2010) in which a trapped climber must resort to very desperate measures, and **'Alive'** (1993) wherein a young rugby team crashes into the high Andes by way of one of the most terrifying air crash scenes yet filmed.




R

**R.A.Lofthouse
Roofing Services
Kirkby Stephen**

We SPECIALISE in traditional and modern slating and tiling

- Traditional slate specialist
- Re Roof / Repair work
- Slating, flagging & tiling
 - Lead work
- Velux replacement /installation
- Chimney repair/replacement

For a FREE quotation or any enquires please call:
Tel: 017683 48787
Mob: 07557738016
or email us on:
r.a.lofthouse@outlook.com



**SWALEDALE
MUSEUM
&
SHOP**
est. 1974

OPEN
June to September
Wednesday to Saturday
10.00 am to 5.00 pm
or by chance and appointment

Children 12 & under FREE
Adults £5
Annual Membership £10

REETH DL11 6TX
www.swaledalemuseum.org

MINERALS & FOSSILS PREHISTORIC LANDSCAPE LEAD MINING SHEEP & FARMING
STONE WALLS & BARNs TRADES & CRAFTS PEOPLE OF THE DALE DIALECT GIFTS & BOOKS

T.A.R. Longstaff

Mobile Hydraulic hose repairs in Reeth and surrounding areas, anywhere anytime.

Also mobile on site welding.

Tel Percy on 07889725349.

M.W Waste Services
Environmental & Drainage Specialists

Septic Tanks Emptied & Cleaned
Blocked Drains Cleared Fast
Grease Traps & Interceptors Emptied
Soakaways Rebuilt & Repaired
Gully Emptying & Street Cleaning
Refuse Collection
Septic Tanks Installed
High Pressure Drain Jetting
Mobile Steam Cleaning
Sewage Plant Maintainace
Industrial & Domestic Work Carried Out

Low Hang Bank Depot: **Tel: 01325 377860/377850**
Melsonby
Richmond
North Yorkshire
DL10 5NQ
24/7 Call Out
[Http://www.mwwaste.co.uk](http://www.mwwaste.co.uk)

Clear Your Blocked Drains Fast With Our High Pressure Jetter
Free Quotes & Estimates

Dales Police Crime Bulletin



Monthly Police Report May 7th - June 7th

We do not report crimes whereby victims could be identified, for example, Domestic Violence or Harassment although these are included in the totals below.

Leyburn Police Station covers the areas of Arkengarthdale, Swaledale from Hudswell up to the county border. Wensleydale from the Hambleton to Cumbria borders, Coverdale and Bishopdale,

Crimes of note:

Between 26th- 27th May 2 x electric bicycles were stolen from bike racks on a vehicle in the Low Row area. Overnight 2nd - 3rd June a Burglary took place at Wensley Rugby Club and a large amount of cash was stolen. Between 4th- 6th June 19 ewes and 31 lambs were reported as stolen from the Gayle area.

- 17 - Abandoned Calls (pocket dials/misdials).
- 11 - Road Traffic Collisions (minor).
- 1 - Road Traffic Collision (serious).
- 12 - Violence.
- 16 - Concern for Safety.
- 12 - Road related offences (manner of driving/vehicles without tax or insurance and possible OPL).
- 3 - Civil Disputes.
- 6 - Fraud/Forgery (online/phone).
- 6 - Theft.
- 3 - Highway disruption (Floods/Trees/Animals).
- 2 - Stalking/Harassment.

- 4 - Antisocial behaviour (nuisance).
- 1 - ASB (personal).
- 1 - Lost/Found.
- 4 - Criminal Damage.

In total 161 calls were received reporting either the above or making general enquiries.

If you wish to receive information and updates of events/incidents sign up to North Yorkshire Community Messenger by visiting, <https://www.northyorkshirecommunitymessaging.co.uk> or visit the North Yorkshire Police site on Facebook.

The Neighbourhood Team will continue attending Town/Parish council and community drop-ins/events where duties allow.

PCSO 5232 Don Watson.

PC355 Heather Campbell.

PCSO Sharon Diamond.

PCSO 5550 Tracie Taylor-Paige

VICTORIA DESIGN GROUP LTD
Consulting Civil & Structural Engineers

Consulting Structural & Civil Engineers

*Structural Surveys
All design work undertaken
whether domestic or commercial,
large or small*

Telephone: 01748 886717

Email: office@vdg.co.uk

Website : vdg.co.uk



Home Run

Pet sitting, House sitting, Dog walking

I offer a friendly, personalised pet and house sitting service in and around Swaledale.

Nicola - 07866 336924

nicola@homerundogsitting.co.uk

www.homerundogsitting.co.uk



REETH AND DISTRICT GAZETTE LTD

Handyman/Gardener Vacancy

I'm a single person household and I'm looking for someone to work at my home for 7-8 hours a week, all year round on an ongoing basis.

The work involves odd jobs and light maintenance in the house, and general tidying and some gardening outside. No specialist gardening knowledge required.

My home is in a very beautiful and peaceful location near Reeth and a good hourly rate of pay could be agreed for a suitable applicant.

Please call Cath on 01748 884158

CHARMING OLD COTTAGE IN THE CENTRE OF REETH (sleeps 6+)

Open fire & background heating.

Fully fitted kitchen, dishwasher, fridge/
freezer.

2 bathrooms, 2 double bedrooms, 1 twin bedroom & attic play area/fourth bedroom with 3 single beds.

Private, secure, rear courtyard area.
Dogs welcome.

Contact Denyse on 01325 722786 or
e-mail denyse00@btinternet.com
www.holidaycottageswaledale.com

Geoff Braithwaite Property Maintenance & Painting and Decorating

Tel: 01748 886 783

Mob: 0789 106 3546

Email:

geoff@mukerchapel.co.uk

D. J. OLNEY Painter & Decorator Interior & Exterior Call

07801 026 006

Remedial Massage *musculoskeletal conditions & injuries, headaches, stress and anxiety* Manual Lymphatic Drainage *lymphoedema, post-surgery*

Jennifer Thursfield NAMMT
MLDUK CNHC
Tel: 07889 546608 • Based in Richmond
jtremedialmassage@gmail.com
www.jtremedialmassage.co.uk



KARL LONGDEN PLUMBING

Reeth, North Yorkshire

karllongdenplumbing@yahoo.com

Tel. 01748 889951

Mob. 07969 329893

24 HOUR CALL OUT SERVICE



REETH AND DISTRICT GAZETTE LTD



**SWALEDALE
MOUNTAIN
RESCUE
TEAM**



In an emergency DIAL 999 ask for the POLICE then

**Mountain Rescue / Cave Rescue /
Mine Rescue / Flood Rescue**

Charity Commission Registration No: 1201870, providing Mountain and Cave Rescue in the Northern Yorkshire Dales

The team is made up of highly trained volunteers available, 24/7 in any weather, any time of the day or night.

MOUNTAIN & CAVE RESCUE TEAM

On average we respond to between 40 and 50 calls each year.

In 2023 we attended 46 incidents.

Incidents May 7th to 9th June 2024

7 Incidents this edition

Incident 21: 07/06/2024: Called by the Police to search near Semer Water for a missing person; we quickly located the missing person, sadly they couldn't be revived so we evacuated the body to the road. This was the 4th fatality we've attended recently.

Incident 20: 06/06/2024: Called by the Police to assist with the recovery of a body from dense woodland.

Incident 19: 01-02/06/2024: Team called by the Police for an overnight to

search for this missing person, sadly we located a body in the morning & evacuated the casualty from the hill.

Incident 18: 29/05/2024: Called by the Police following a report of a lost biker on the fells above Masham. On further investigation it appeared that a road biker had followed sat nav a bit too closely and ended a 'bit off tarmac!' once located we attempted to relocate them with a track, but low cloud and fog prevented this, a limited call out for a few team members quickly recovered bicycle and biker, just as the fog cleared and the sun came out.

Incident 17: 26/05/2024: Just as we were about to leave Keld following our training session, a local farmer asked for assistance with a crag fast sheep. Several of the team set up a rope system and safely recovered the sheep (4 of them!) to the top.

23/06/2024: Both team search dogs and handlers deployed to an out of area search

Incident 16: 19/05/2024: Called by the Ambulance Service to assist the air ambulance with an off-road medical emergency, team members training 500m away responded with the rest of the team close behind, sadly the casualty couldn't be saved, we evacuated the body from the hill.

Incident 15: 13/05/2024: Very occasionally we get called to help the Ambulance Service with tricky situations, tonight was one of these unusual urban jobs. The Ambulance

REETH AND DISTRICT GAZETTE LTD

needed to get a patient from a difficult location inside a flat in Richmond.



Incident 17: Sheep rescue(s)

Thanks to the following for their recent support:

Reeth PO & Corner Shop £52.17,
Norwegian Twinning Association
£847.06, St Oswalds Church, Askrigg
£179.40

During the month we've also supported the Finghall Barrel Push & the Swaledale Outdoor Club Marathon.

This season's fundraising neck tubes are now available from the link on our Facebook page or from the Tan Hill Inn, Kings Head, Gunnerside & The Black Bull Reeth.



MULTIWRAP MULTIFUNCTIONAL HEADWEAR

SMRT

Support the Reeth & District Gazette

Order your printing from us and we will credit 10% of the value of your order to the Gazette account at no extra cost to you!

Quote Gazette when ordering

Booklet Printing

- Reports
- Manuals
- Brochures
- Catalogues
- Newsletters

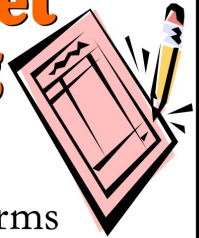


Saddle Stitched - Perfect Bound - Wire Bound

From your computer files or hard copy

NCR set Printing

- Invoices
- Estimates
- Order Forms



Fast Turnaround - Padded - Loose Sets



Reflections
PhotoGraphic
Services

Tel: 01833 690733

www.refprint.co.uk

email: sales@refprint.co.uk

Reeth Community Orchard Garden celebrates the 20th anniversary of its Official Opening

Many are aware that when Reeth is buzzing with people and cars, the Orchard Garden is an 'oasis of calm' which is appreciated by not only those of us who live in Reeth, Swaledale and Arkengarthdale, but also by many of our visitors who discover it for the first time, or return to see how it's looking.

An invitation event was held on the 29th April in Hudson House, for the anniversary of the official opening of the Orchard Garden. This had been a significant restoration project, arising from the Millennium and the community's desire to suitably mark the occasion. Led by volunteers of all ages and from across the community, many of those original volunteers joined us (the Reeth Community Orchard Group) to celebrate their achievement in creating a lasting legacy for us all to enjoy.

Barclays had owned and provided their banking services from Hudson House, until they announced the closure of the branch (along with 169 other rural branches across the country) in 2000. For the final 20 years of Barclays tenure the manager no longer lived upstairs and so the gates to its back garden were locked and the existing garden was left to be unloved and uncared for, and for nature to decide its fate. This provided the location for

the millennium project.



The sight the community were met with when they opened that gate for the first time

The volunteers' passion, energy, dedication, and selflessness led to real commitment on their part, as the restoration project was launched on 31st May 2002 and after almost two years of hard work, completion was marked by the official opening at the end of April 2004.

The progress of the project is captured on many photographs, from the moment that the side gate was unlocked and opened for the first time for the big 'what are we taking on' reveal. Funds were raised and help from various experts was given, including the physical strength of the British Army's new recruits at Catterick! All this is easy to say but it really was quite a feat of effort organisation, co-ordination and timing.

Most of the invited celebration guests had been in there at the sharp end and as lives had changed and things moved on, for many it was the first time they had seen each other since 2004. It was lovely to hold the gathering to celebrate

REETH AND DISTRICT GAZETTE LTD

their achievement and legacy to the community. Such a very happy event that generated a real feeling of warmth.

The Reeth Community Orchard Group are organising a (weather permitting) community event on Sunday 14th July at 2:30pm in the Orchard Garden with mocktails and live music from Reeth Band, to which we hope you will be able to come along and enjoy.

In the meantime the garden is always worth a visit and particularly now as everything is lush and the colours are bursting.



Chris Browne, Chair RCOG

JOIN OUR 20TH ANNIVERSARY

SUMMER MOCKTAIL PARTY

WITH REETH BRASS BAND

14 JULY

REETH COMMUNITY ORCHARD GARDEN

2.30 - 4:00 PM
FREE ENTRY

SUMMER HAT COMPETITION FOR 'CHILDREN AT HEART'

YORKSHIRE FOOT CLINICS

Podiatry/Chiropody
Alex Kravchenko MChS, BSc Pod (Hons)
Nail cutting, callus, corns & ingrowing nails
All treated in the comfort of your home
Tel. Richmond 850020
Or Hawes 667449
Always insist on state registered



PEST CONTROL

Don't let pests become a problem, call us right away for a professional, reliable and discreet service.

- Rats / Mice
- Wasps / Insects
- Nuisance birds



SCAN ME

07818 836527

www.yorkshiredalespestcontrol.com



Thank you from Swaledale Festival

Over a packed fortnight in late May and early June, Swaledale Festival burst over the northern Dales, filling its chapels, churches and halls with exquisite classical, folk, world and jazz music, as well as film, theatre, comedy, talks and participatory workshops.

Festival-goers were transported by canonical masterpieces, surprising re-inventions, globe-trotting grooves and skilful improvisations. Walkers explored the area's unique landscape, and workshop participants tried their hand at walling, 'ink and stick' art, poetry-writing, foraging and folksinging.

Behind the scenes, the Festival took outstanding musicians into four schools and four care homes to perform for pupils and residents, and arranged a concert in a prison that was deeply moving and memorable for inmates and staff.

A huge **thank you** to our artists, volunteers, sponsors and to you - the audience - who make Swaledale Festival the collective cultural celebration that it is.

Do you have feedback for the Festival team? Visit www.swalefest.org to fill out the 2024 survey or request a paper copy from our office on 01748 880018.

Swaledale Festival will return in 2025 from **24 May to 7 June**. We hope to see you next year!



Chairman's Reception, at The Station, Richmond



AKA Trio at St Andrew's Grinton



Emma Johnson's Orchestra of the Environment at St Mary's Richmond



Ganda Boys Workshop Reeth MH

REETH AND DISTRICT GAZETTE LTD



Ink and Stick Drawing, Reeth



Graffiti Classics at St Andrew's Grinton



Foraging Walk, Round Howe Woods



Julian and Jiaxin Lloyd-Webber at St Andrew's Grinton



Equinox Duo at St Mary's Muker



The Carravick Sisters at Low Row



BONE-AFIDE Trombone Quartet at Holy Trinity, Wensley



The Whoop Group

BELLERBY OPEN GARDENS

Sunday July 7, 2024

10:00am – 5:00pm

(Last admission 4:30pm)

Come & visit our village gardens, spot the scarecrows and enjoy home-made refreshments plus a flower festival & music in St Johns Church and plant sale in our Community Garden

New for 2024:

Vintage vehicles, "Old Bellerby" photographic exhibition & children's wildlife trail

Admission:

Adults £5, Children (u16) Free

All proceeds to support local good causes



*Beauty and tranquillity.
Quality and care.*

Cat Hole Cottages | Cat Hole House | Thwaite
Richmond | North Yorkshire | DL11 6DR
Tel: 01748 886366

Discover our treasury of gorgeous cottages in Swaledale and Arkengarthdale.
Well-equipped, stylish and individual, our cottages offer guests a wonderful holiday in the midst of superb scenery!

**To find your perfect cottage
call Judith on 01748 886366**

www.catholecottages.com

HARKERS COACHES



Hill Top Garage, Reeth
Tele: 01748 884533
Pauls Mob: 07703 559959

**COACH,
PRIVATE
HIRE &
GARAGE**

Coach, Mini Bus and private taxi hire
General vehicle maintenance including services, tyre supply, fitting and balancing.

M. GUY - PLUMBING

For all your plumbing requirements
AGAS & RAYBURNS SERVICED
kathrynguy@designermakersmarket.co.uk
Tel: 01748 - 825640

Langthwaite - Arkengarthdale

RED LION INN

Free House
Real Ales – Bar Snacks
Books & Maps
Tel. 01748 884218

50th Anniversary of Swaledale Woollens



On a glorious sunny Sunday, 19th May, over 100 people gathered outside Swaledale Woollens in Muker to celebrate 50 years of the shop.

Pictured in the photo below of the golden ribbon being cut outside the shop are Robert & Jane, son & daughter of Mr & Mrs David Morris who started the business 50 years ago, Mrs Kathleen Hird who took over the business when Mr & Mrs Morris retired and Ken & Gillian Whitehead who took over the business when Kathleen retired.



Most of the Hand Knitters who knit for Swaledale Woollens today came and are pictured outside the shop, where Muker Silver Band played.



Along with the residents of Muker we all went up into the village hall for tea provided by E A Sunter Catering and the cake, iced by Louise Metcalfe, was cut.



It was also the day to say a big thank you to Anne Guy who is retiring after working at Swaledale Woollens for over 30 years, pictured receiving a bunch of flowers. We wish her all the very best in her retirement. **Gillian Whitehead**





**ELLERTON ABBEY
ANTIQUES
&
MRS PUMPHREY'S
TEAROOM**

Open Thursday, Friday and Saturday 10 - 4
Ellerton Abbey, Richmond,
North Yorkshire DL11 6AN
Tel: 01748 884321
Mobile: 07948 426099

Find us on
facebook 



The Old School Muker
Art Gallery & Craft Centre

Guning Lane, Muker, Swaledale, DL11 6QG
www.theoldschoolmuker.co.uk
Tel: 01748 886155
email: ask@theoldschoolmuker.co.uk

SWALEDALE

'POTTING ON THE NEXT GENERATION IN THE TWO DALES'

SEEDLINGS
PLAYGROUP

Find us on Facebook – Search Seedlings Reeth

REGISTERED CHARITY No- 1045715

Swaledale Seedlings playgroup

'Stay and Play' Sessions

Mondays at Gunnerside Village Hall
& Thursdays at Reeth Memorial Hall
9.30am until 11:25am

Open to all children under the age of 5

£2 per child per session

Pop into a session or message us on Facebook
for further information

Diary Dates

July

Thurs 4th Jul - Over The Moon - Reeth Memorial Hall 8pm

Sat 6th & Sun 7th Jul - 10am to 4pm: 150th anniversary exhibition and celebration at Low Row & Feetham Literary Institute with Tea and Cake.

Sun 7th Jul - Longest Day service Gunnerside Chapel

Thur 11th Jul - 7.30pm The last Years of Arkengarthdale Lead Mines talk at the Hub, Arkengarthdale, £8pp

Sat 20th Jul - 10am to noon, Coffee Morning, Reeth Evangelical Congregational Church

Sat 20th Jul - 9am to 1pm, mobile skip on the green

Thurs 25th Jul - TLC@Gunnerside village hall - talk by Wendy Knight: What did we do before plastic?

Fri 26th Jul - Everly Brothers & Buddy Holly Tribute Show - Reeth Memorial Hall 8pm

August

Sat 17th Aug - 10am to noon, Coffee Morning, Reeth Evangelical Congregational Church

Sun 25th Aug - pm to 4pm, village Songs of Praise on Reeth Green

September

Thur 19th Sept - 7.30, Cutting it Fine at Arkengarthdale Hub, £8pp

Thurs 26 Sept - TLC@Gunnerside village hall - 7.30 - card-making with Emma Trussler

3D Cross-Stitch



The Nutmeg Gallery

Dozens of models on display together with kits, accessories and the full range of DMC stranded cotton. Normally open Mon-Fri, and Saturday afternoon.

Reeth Dales Centre, Off Silver Street,
Reeth, DL11 6SP, 01748 884926



www.3dcrossstitch.co.uk

Upper Dales Mobile Skip Service

**Reeth Green, Saturday 20th July
9am-1pm**

The following household waste is accepted at all mobile centres:

- furniture (including beds, mattresses, sofas and chairs), bric-a-brac;
- paper, cardboard, telephone directories, books;
- glass, food and drink cans, foil, scrap metal;
- mixed textiles and clothes;
- fluorescent tubes, TVs and monitors, fridges and freezers, large appliances, small appliances;
- wood.

MUKER SHOW 2024

WEDNESDAY 4TH SEPTEMBER
FROM 1000

Join us for the 117th spectacular that is Muker Show. Top Swaledale sheep, stunning fell race, Craft Tent (it's back!), trade stands, Muker Silver Band, children's races

PAY AT GATE
£10 ADULTS,
CHILDREN UNDER 15
FREE



MICHAEL GUY ELECTRICAL

FULLY QUALIFIED ELECTRICIAN

Over 20 years experience working in
the dales in all areas of
electrical work.

Some of my services include:

Complete rewires | Electrical installation
condition reports | Electrical vehicle
charging points | Additional & alterations
to socket & lighting points |
Replacement of storage heaters to modern
eco panel heaters.

Contact Michael :

T: 01748 886097 | M: 07980130017

Mail: info@michaeltguyelectrical.co.uk

Website: Michaelguyelectrical.co.uk

**APPROVED ROINTE HEATER INSTALLER
NICEIC APPROVED CONTRACTOR**



The Bridge Inn, Grinton

The Bridge Inn-Grinton is a charming old coaching inn, situated on the banks of the River Swale. We offer a warm welcome to families and dogs, serving, hearty pub food and cask ales.

With en suite accommodation available, our guests can enjoy various activities including playing traditional board games and darts.

Open 12pm until closing time. Serving food until 8:45 pm. It is recommended to book in advance to avoid disappointment.

Booking is available directly or on Booking.com. For more information, call 01748 884224 or visit our Facebook page [The Bridge Inn-Grinton.](#)